

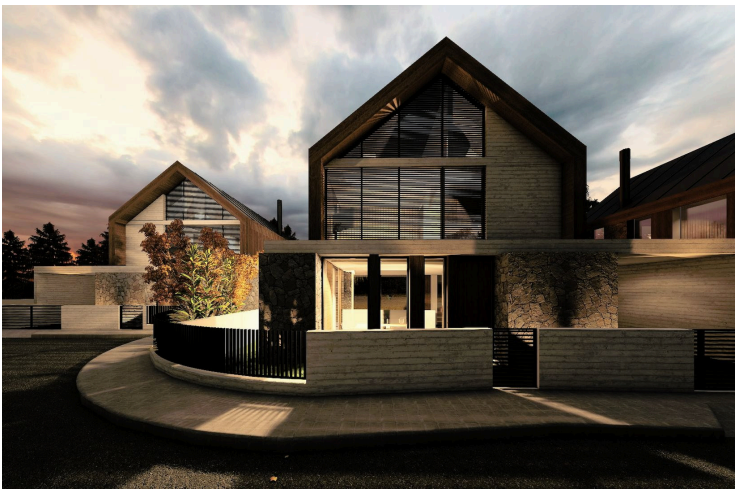
#1025

3-4 bedroom houses in Platres

 Platres Pano, Limassol

€610,000 +VAT





Overview

Specifications

Bedrooms

 3


Bathrooms

 2

Covered

 141 m²

Type	Detached Villa
Toilets	1
Plot	237 m²
Covered veranda	24.5 m²

Covered parking	20 m²
Status	Off plan
Year of construction	2024
Energy efficiency rating	 A

Description

This amazing project in Platres is a residential complex consisting of six detached 3–4-bedroom holiday houses, located just 5 minutes away from the famous Millomeris waterfalls. Half of the houses are equipped with a swimming pool.

Designed in Alpine chalet style, the houses offer freshness in the summer and cosy fireplace vibes in the winter, when you come back home from the ski resort located 5-minute drive away. All necessary facilities and amenities (shops, restaurants, etc.) are also conveniently near. The houses are thoughtfully integrated into the surrounding area, highlighting the importance of environment-friendly architecture.

Hidden in pines and surrounded by waterfalls, Platres has always been a wonderfully popular mountain resort among international royal families, diplomats, artists and aristocracy. The picturesque location of Platres at the very foot of the Troodos mountain range, at an altitude of 650 meters above the sea level guarantees coolness even in extremely hot weather.

With its natural charm and colonial architecture, the village is an attraction for nature-lovers enjoying beautiful mountains, clean air and breathtaking views.



Additional information

Facilities

Parking, Covered

Contact us



Pavlos Konialis

 pavlos@totalviewhomes.com

