

#1043

Modern 2 bedroom apartment in Panthea area

 Mesa Geitonia, Limassol

€450,000 +VAT





Overview

Specifications

Bedrooms

 2


Bathrooms

 1

Covered

 88 m²

Type	Apartment
Toilets	1
Covered veranda	20 m²

Status	Under construction
Year of construction	2024
Energy efficiency rating	 A

Description

This newly designed project, will be located in one of Limassol's prime locations, Panthea. The building's contemporary design and elegant layout will add beauty to the neighbourhood. The building will accommodate luxurious 2 and 3bedroom apartments with limitless natural light and unforgettable views of Limassol's coastline and city. A fully equipped gym and a communal swimming pool will add comfort and luxury to all residents.

A modern apartment building in one of Limassol's most prestigious areas.

- The luxurious building sits in a quiet residential neighbourhood in Panthea with abundant natural light and spectacular views of the Limassol coastline and city from every apartment.

- 1st floor: Six 2-Bedroom apartments and one 3-Bedroom apartment.

- 2nd floor: Six 2-Bedroom apartments and one 3-Bedroom apartment.

- 3rd floor: Six 2-Bedroom apartments and one 3-Bedroom apartment.

Communal swimming pool and Gym.

2-car parking spaces for all apartments.

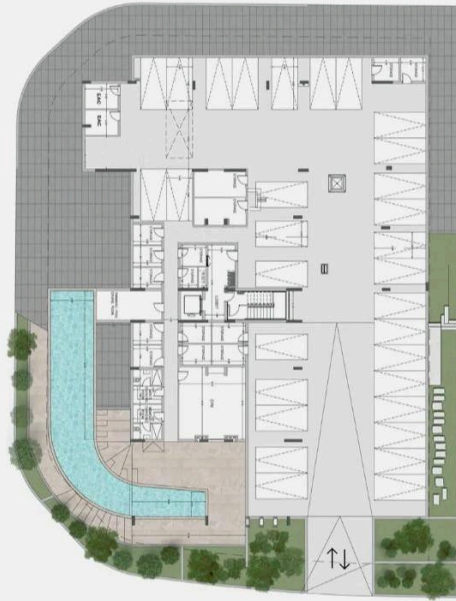
Energy Efficiency: A+.

Current apartment is on the 2nd floor.



Floor plans

BASMENT



THIRD FLOOR



Additional information

Facilities

Parking, Covered

Storage

Features

Balcony

Bright

City view

Guest WC

Distances

Amenities

 500 m

Sea

 3 km

Schools

 300 m

Contact us



Pavlos Konialis

 pavlos@totalviewhomes.com

