

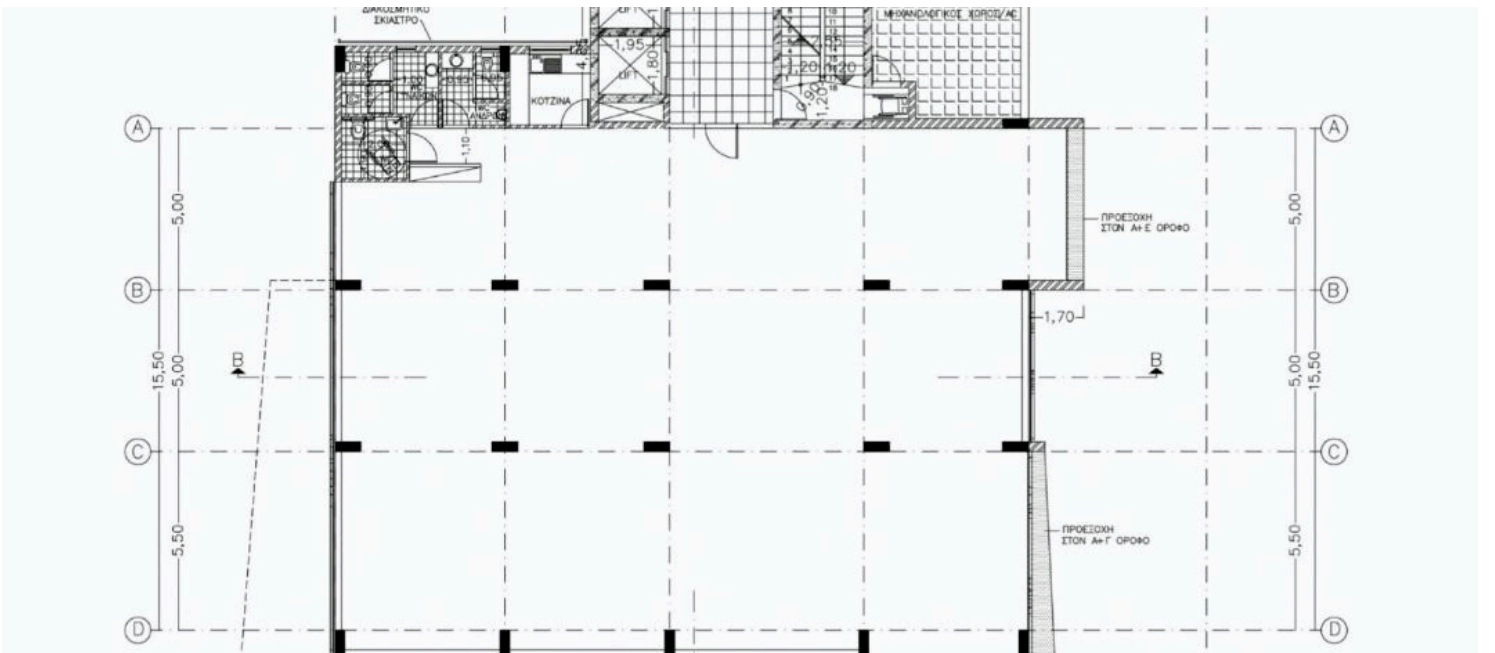
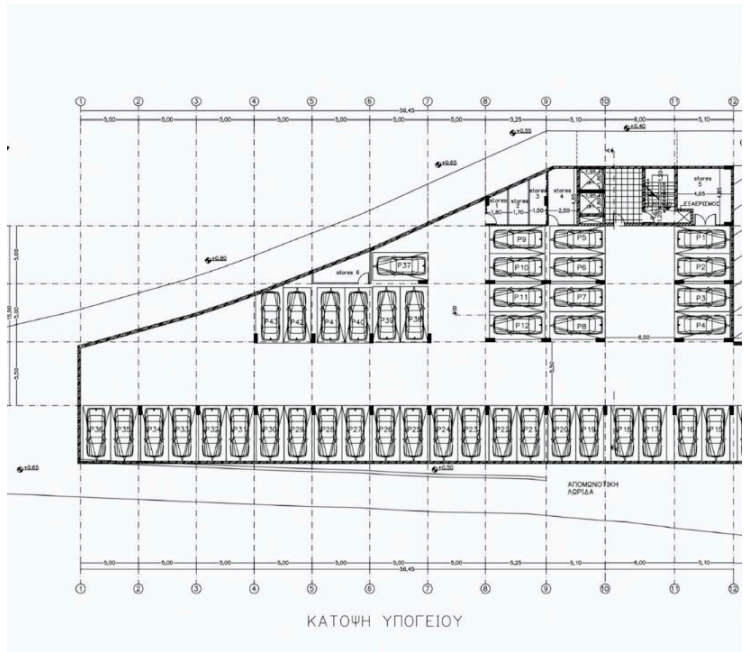
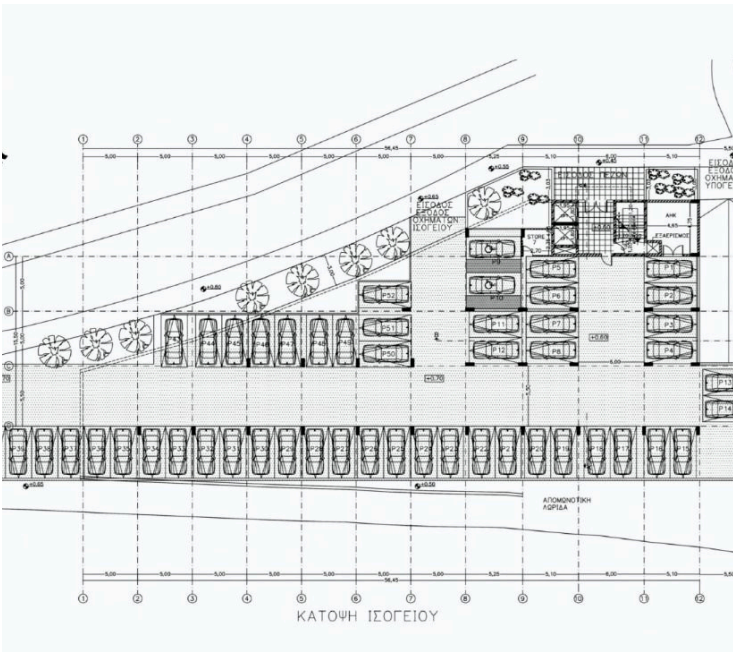
#1069

Commercial building/Offices in Kato Polemidia

 Kato Polemidia, Limassol

€14,700,000 +VAT





Overview

Specifications

Covered

 **2450 m²**

Type **Commercial Building**

Plot **2015 m²**

Status

Off plan

Description

This new development is a luxurious commercial building that offers a premium business environment in Kato Polemidia.

With its grand architecture and sophisticated design, this center sets the stage for success.

Boasting 95 parking spots, convenience is at your fingertips, ensuring hassle-free visits for you and your clients. Spanning over 2500 square meters, the spacious and versatile facilities provide ample room for your business to thrive.

Experience a new level of elegance and productivity at this beautiful Business Center.

The Business Center will be equipped with provisions for a VRV system, seamlessly integrated into a raised floor and suspended ceiling setup. The kitchen and bathroom fittings will be sourced from esteemed European suppliers to offer a perfect blend of durability, functionality and aesthetic appeal.

Moreover, the common areas will be paved with high quality ceramic tiles to elevate the overall ambiance with a touch of elegance to the building.



Additional information

Features

Business facilities

Contact us



Pavlos Konialis

 pavlos@totalviewhomes.com

