

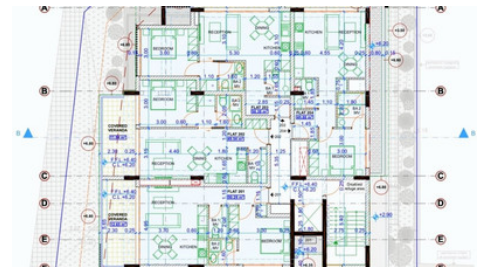


Modern one bedroom apartment near Larnaka Marina

 Larnaca, Harbor

#1147





Price	€166,000 +VAT	Type	Apartment
Bedrooms	1	Bathrooms	2
Covered	49 m ²	Covered veranda	12 m ²
Year of Construction	2025	Status	Off plan
Energy efficiency rating	A	Floor	1 / 3
Area	Larnaca, Harbor		

Description

Off-plan development, set to begin construction at the start of 2025 with an expected delivery by mid-2027. This modern, three-storey building will feature ten exquisite apartments, designed for those seeking luxury, comfort, and convenience in the heart of Larnaca.

Located in a prime area within walking distance to the beautiful beach and the vibrant new Larnaca Marina, this development offers close proximity to all essential amenities including shops, restaurants, cafes, and entertainment venues.

The property includes eight one-bedroom apartments, each ranging from 49 to 51 square meters, offering spacious open-plan living areas, modern kitchens, stylish bathrooms, and private balconies. There is one two-bedroom apartment of approximately 75 square meters, featuring a large living space, contemporary kitchen, two bedrooms, and a generous balcony of 24 square meters. . Additionally, the building will house a luxurious three-bedroom apartment with a roof garden, approximately 107 square meters in size, providing expansive living areas, a state-of-the-art kitchen, three elegant bathrooms, and an exclusive roof garden .

The building boasts a sleek, contemporary design with high-quality finishes and materials. Built to the latest energy standards, it ensures sustainability and reduced utility costs.

Situated just a short stroll from the pristine beaches of Larnaca, residents can enjoy the Mediterranean climate to its fullest.

This development presents an exceptional investment opportunity with high rental yield potential due to its prime location and modern amenities. Secure your future home or investment property today in one of Larnaca's most sought-after areas.

Pavlos Konialis

CEO

✉ pavlos@totalviewhomes.com

Facilities

Aircondition, Provision

Elevator

Landscaped garden

Parking, Covered

Storage

Features

Heart of city center

Balcony

Investment opportunity

Double glazing

Modern design

Near amenities

Easy access to main roads

Fitted wardrobes

Bright

En suite Shower

Near bus route