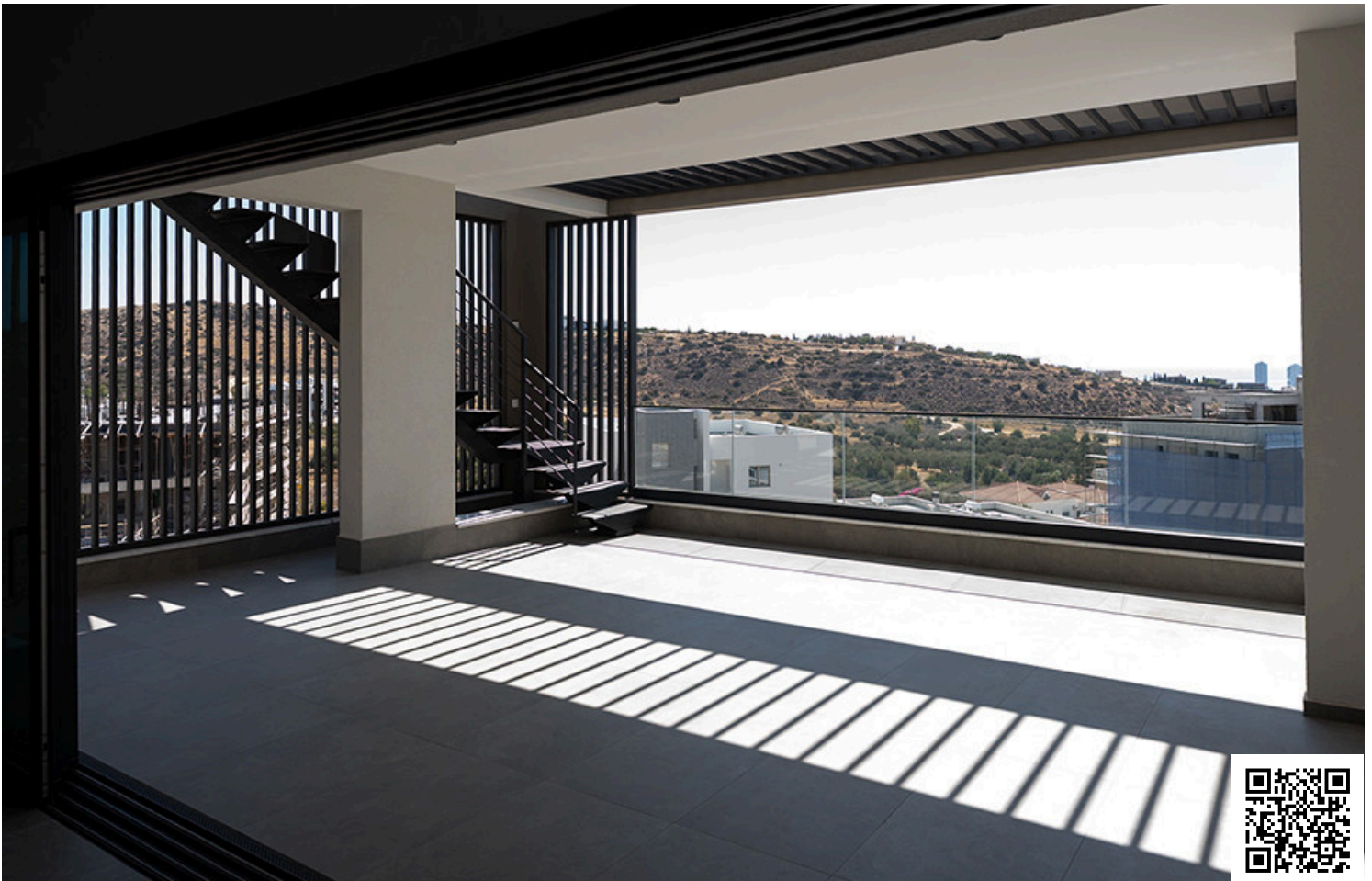


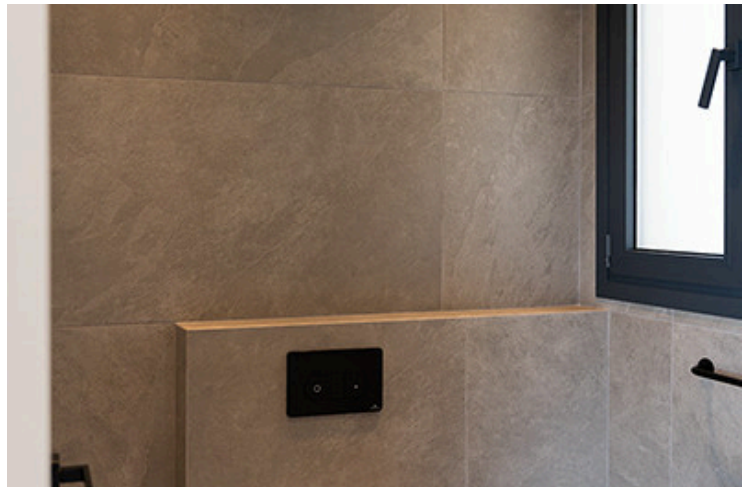
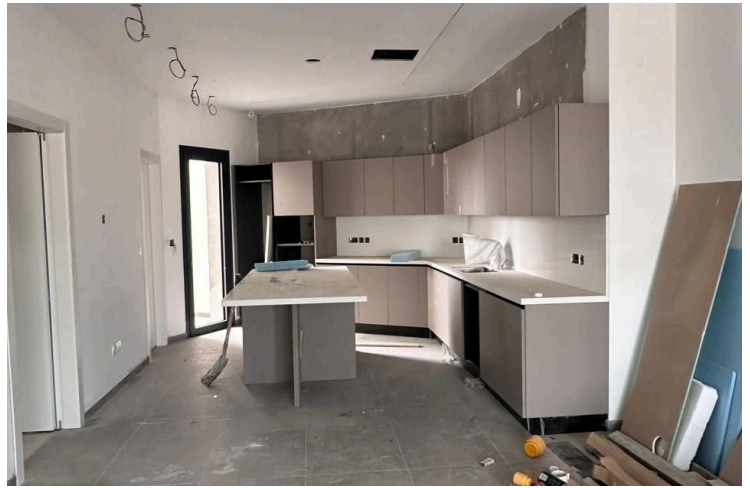
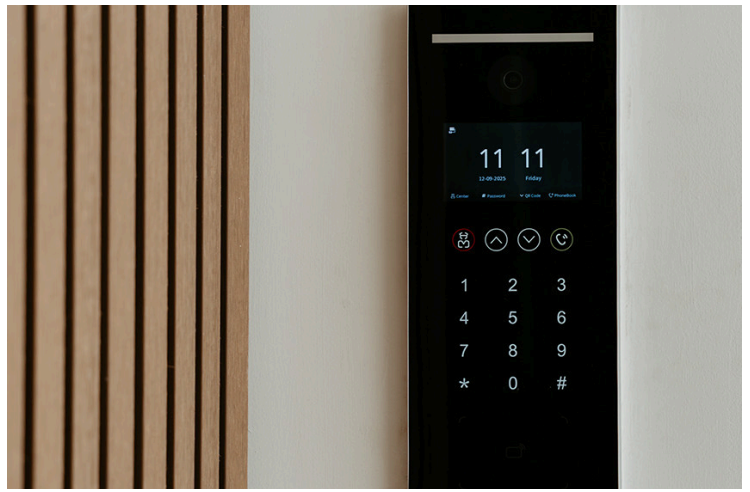
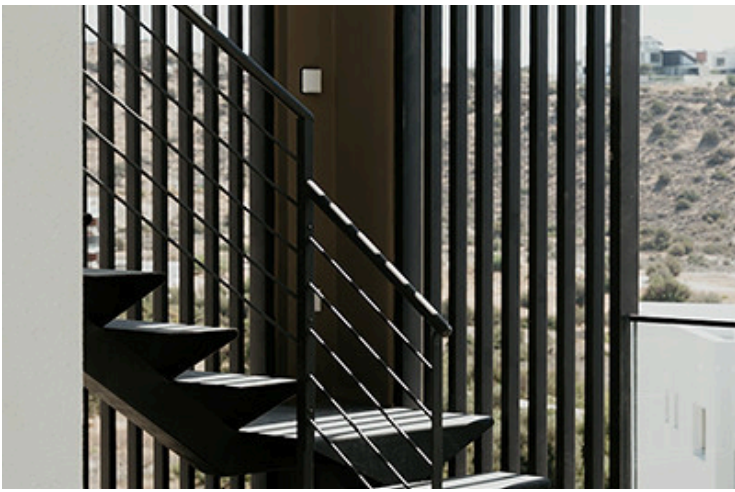
#1174

Two bedroom ground floor apartment in Sfalaggiotissa-Germasogeia

 Germasogeia, Limassol

€550,000 +VAT





Overview

Specifications

Bedrooms

 2


Bathrooms

 1

Covered

 89 m²

Type	Apartment
Covered veranda	21 m²
Uncovered veranda	68 m²
Garden	126 m²

Status	Completed
Year of construction	2024
Energy efficiency rating	 A

Description

This beautiful project, located in the esteemed Germasogeia area of Limassol, offers an unparalleled living experience with breathtaking views of Limassol's coastline. This exclusive development features 10 luxurious modern apartments, each with covered parking.

Apartment Details:

Ground Floor:

Two-bedroom flat with private garden and covered parking

Features:

The unique size of the project offers residents a sense of exclusivity and security. Every apartment is crafted with the highest quality materials, tiles, and sanitary ware, ensuring satisfaction for even the most discerning clients seeking a superior living environment.

Location Highlights:

Situated in the prestigious Germasogeia area, close to all amenities

Only a 5-minute drive to the highway.

Germasogeia is a prime location, rapidly developing into a new corporate business hub

Easy access to modern infrastructures, fine dining, and high-end boutiques along Limassol's coastline.

Additional Amenities:

Photovoltaic systems in common areas



Floor plans



Additional information

Facilities

Aircondition, Split system

Heating, Provision

Parking, Covered

Storage

Features

Balcony

City view

Combined kitchen and dining area

Country view

Double glazing

Easy access to highway

Easy access to main roads

En suite shower

Fitted wardrobes

Garden

Near amenities

Quiet area

Rental potential

Shutters, electric

Contact us



Pavlos Konialis

 pavlos@totalviewhomes.com

