

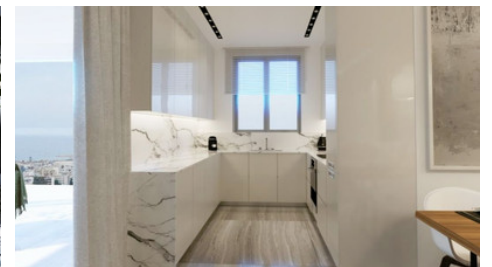


Ready to move in brand new 2 bedroom apartment with roof garden in Larnaka

 Larnaca, Harbor

#1193





<b>Price</b>	€320,000 +VAT	<b>Type</b>	Apartment
<b>Bedrooms</b>	2	<b>Bathrooms</b>	2
<b>Covered</b>	80 m <sup>2</sup>	<b>Roof garden</b>	32 m <sup>2</sup>
<b>Covered veranda</b>	19 m <sup>2</sup>	<b>Year of Construction</b>	2024
<b>Status</b>	Key ready	<b>Energy efficiency rating</b>	A
<b>Floor</b>	4 / 4	<b>Area</b>	Larnaca, Harbor

## Description

An Innovative Living Experience in Larnaca's Most Dynamic Area

This beautiful project offers an innovative concept that seamlessly blends top-quality apartments with traditional hospitality. Each residence is meticulously designed and finished to an exceptional standard, creating an inspiring and iconic place to live.

Located in the most up-and-coming area of Larnaca, this development is conveniently close to the Larnaca Marina and the newly opened Radisson Blu Hotel. An abundance of amenities, including supermarkets, bakeries, beauty salons, and Larnaca's first mall, are all within a short driving distance.

The project features a selection of 1, 2, and 3-bedroom apartments, all boasting spacious floor layouts designed to allow abundant natural light. Each apartment includes its own generous private balcony with glass facades, covered parking, and a ground-level storage room. Residents can also enjoy a shared communal pool, perfect for relaxation.

This beautiful project represents an unparalleled opportunity to enjoy contemporary living in Larnaca's most vibrant area

## Pavlos Konialis

CEO

✉ [pavlos@totalviewhomes.com](mailto:pavlos@totalviewhomes.com)

## Facilities

Aircondition, Provision

Pool, Communal

Storage

Parking, Covered

Elevator

Solar water heater

---

## Features

Easy access to main roads

Balcony

Bright

Ceramic tiles

Rental Potential

Modern design

Combined kitchen and dining area

Fitted wardrobes

Corner

Double glazing

En suite Shower

Near amenities

---

## Distances

**Airport**

9.6 km

**Sea**

2.6 km

# Floor plans

