

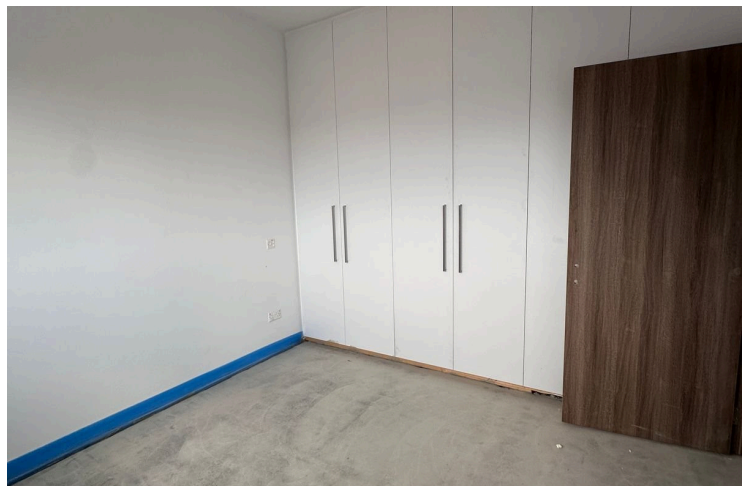
#1196

Modern one bedroom apartment for Sale in Linopetra, Limassol - 2nd floor

 Linopetra, Limassol

€270,000 +VAT





Overview

Specifications

Bedrooms



Bathrooms



Covered

50 m²

Type	Apartment
Showers	1
Toilets	1
Covered veranda	13 m²
Status	Completed

Year of construction	2024
Furnished	Unfurnished
Structure	Concrete
Energy efficiency rating	A

Description

Discover Your Dream Home in a Thriving Cosmopolitan Hub

We are proud to present an exclusive opportunity to own a brand-new apartment in a premium residential building currently under construction in the highly desirable Linopetra area of Limassol. Designed with the modern homeowner in mind, this building offers nine meticulously crafted units, each promising luxury, comfort, and a prime location.

Property Overview:

Total Units: 9 apartments

3 One-Bedroom Apartments: Perfect for singles or couples, these units are designed for comfort and efficiency.

4 Two-Bedroom Apartments: Spacious and well-appointed, ideal for families or those needing extra space.

2 Two-Bedroom Penthouses: Enjoy the ultimate luxury with these top-floor units, each featuring a private roof garden complete with ceramic floors, a barbecue area, and covered space.

Featured property is a one bedroom apartment of 50m² internal space plus 13m² covered veranda on the 2nd floor of a 4 storey modern building!

Additional information

Facilities

Elevator

Parking, Covered

Storage

Gated complex

Solar photovoltaic panels

Heating, Provision

Solar water heater

Features

Bright

City view

Easy access to main roads

Marble stairs

Sound insulation

CCTV

Double glazing

Entrance gate

Rental potential

Spacious rooms

Ceramic tiles

Easy access to highway

Fitted wardrobes

Shutters, electric

Veranda

Distances

Amenities



500 m

Sea



2.5 km

Contact us



Pavlos Konialis

 pavlos@totalviewhomes.com