

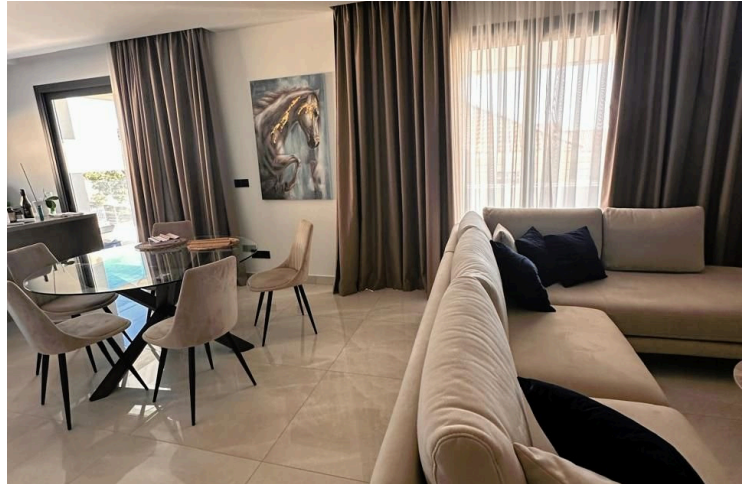
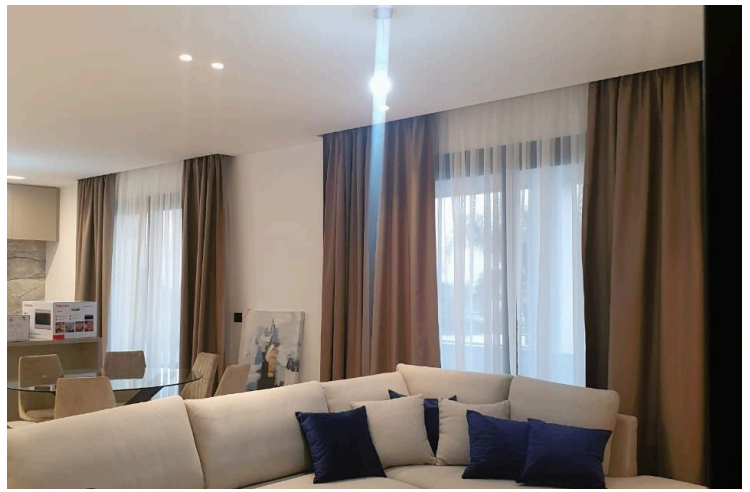
#1204

# Luxurious 2-Bedroom Apartment in Agia Fyla / Panthea Area

 Panthea, Limassol

**€2,500** /month





# Overview

## Specifications

Bedrooms



Bathrooms



Covered



Type	<b>Apartment</b>
Showers	<b>1</b>
Toilets	<b>2</b>
Status	<b>Key ready</b>

Year of construction	<b>2022</b>
Furnished	<b>Fully furnished</b>
Energy efficiency rating	<b>A</b>

## Description

Nestled between Agia Fyla and Panthea, just 2 minutes from the highway, this luxurious 2-bedroom, 2-bathroom apartment offers an unparalleled living experience. Located on the 1st floor of an exclusive, small block with only 6 flats—all owned by residents—this south-facing apartment boasts breathtaking partial sea and city views.

Spanning 90.5 square meters of elegant living space, plus an additional 39 square meters of veranda area, this home is designed with the highest quality materials, reflecting its original intention for personal use. The apartment features a spacious covered veranda, perfect for relaxing or entertaining, and a smaller balcony at the back.

The custom-made, fully equipped kitchen is a chef's dream, while the open-plan living area comes furnished, including a TV for your convenience. The entire apartment is fully air-conditioned, ensuring comfort year-round. For added security, the property includes a custom-made security door.

This apartment is future-proof, with plans to connect to photovoltaics in the coming months, making it both luxurious and energy-efficient. Additional amenities include covered parking and a storage room.

Available from the 1st of October, this property is listed at €2,500 per month. Please note, no pets are allowed.

Don't miss the opportunity to make this exquisite apartment your new home!



# Additional information

## Facilities

Aircondition, Split system

Parking, Covered

Storage

Elevator

Solar photovoltaic panels

Heating, Split system

Solar water heater

## Features

Balcony

Easy access to highway

Fitted wardrobes

Quiet area

Veranda, large

Bright

Easy access to main roads

Kitchen appliances

Sea view

City view

En suite shower

Luxury specifications

Veranda, front

## Contact us



**Pavlos Konialis**

 [pavlos@totalviewhomes.com](mailto:pavlos@totalviewhomes.com)

