

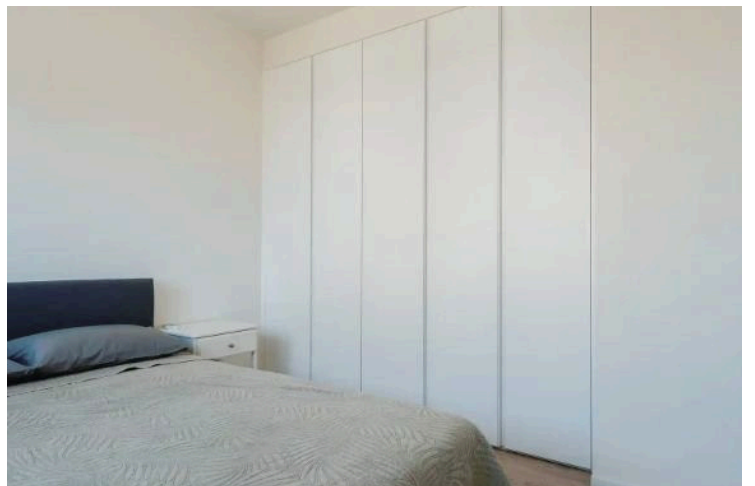
#1213

Luxury 2-Bedroom Apartment for Rent at Sunset Gardens, Limassol

 Tserkez Tsiftlik (Tserkezoi), Limassol

€2,500 /month





Overview

Specifications

Bedrooms



2

Bathrooms



2

Covered



85 m²

Type

Apartment

Year of construction

2023

Status

Key ready

Description

Experience luxury living in this brand-new 2-bedroom apartment, located in the prestigious Sunset Gardens complex, adjacent to City of Dreams Limassol. Available for rent at €2,500 per month, including common expenses, this apartment offers an exceptional lifestyle with a host of amenities.

Key Features:

Spacious Living: 85 m² of internal space, with a modern layout and stylish design.

Fully Furnished: Equipped with brand-new, high-tech Bosch appliances, including a TV, washing machine, and dishwasher. The kitchen is sleek and modern, featuring top-of-the-line Bosch appliances.

Comfort: Full brand-new Mitsubishi air-conditioning units and a big covered veranda furnished for your relaxation.

Bedrooms & Bathrooms: 2 bedrooms, with an ensuite in the master bedroom and a main bathroom.

Parking & Storage: Dedicated parking space and additional storage available.

Amenities: Residents have access to large communal green areas, swimming pools, tennis court, padel court, two cafeterias, a working space, and a gym. As a bonus, enjoy free membership to Sanctum Gym at Sunset Gardens.

Security: Located within a secure, gated community with 24-hour security.

Pet-Friendly: Pets are welcome, making it the perfect home for all family members.

This apartment is an ideal choice for those seeking a luxurious, secure, and convenient living space in Limassol. Don't miss the opportunity to live in one of the city's most desirable locations.



Additional information

Facilities

Aircondition, Split system

Gated complex

Parking, Uncovered

Childrens playground

Gym

Pool, Communal

Elevator

Heating, Split system

Tennis court

Features

24-hour security

Bright

Easy access to main roads

Garden

Next to green area

Balcony

Ceramic tiles

En suite shower

Modern design

Quiet area

Bicycle parking

Double glazing

Entrance gate

Near amenities

Contact us



Pavlos Konialis

 pavlos@totalviewhomes.com

