

#1233

Brand new 2 bedroom apartments in Kalithea area

 Dali, Nicosia

€160,000 +VAT





Overview


Specifications

Bedrooms

 2

Covered

 80 m²

Type	Apartment	Year of construction	2024
Covered veranda	14 m²	Energy efficiency rating	 A
Status	Under construction		

Description

Discover your new home in a modern two-storey building in the sought-after Kallithea area. This small development is ideally located across from a green area, with additional greenery at the rear, and next to a pedestrian pathway, offering a serene and comfortable living environment.

Key Features:

Only 6 apartments for exclusive living

2 bedrooms in each apartment

Private storage room and covered parking for each apartment

Provision for electric car charging station

Energy Efficiency Class A, with 8 cm thermal insulation for optimal energy savings

Prices start from €160,000 + VAT.

The apartments will be ready for delivery in 15 months, by January 2026



Floor plans



αρχιτεκτονός

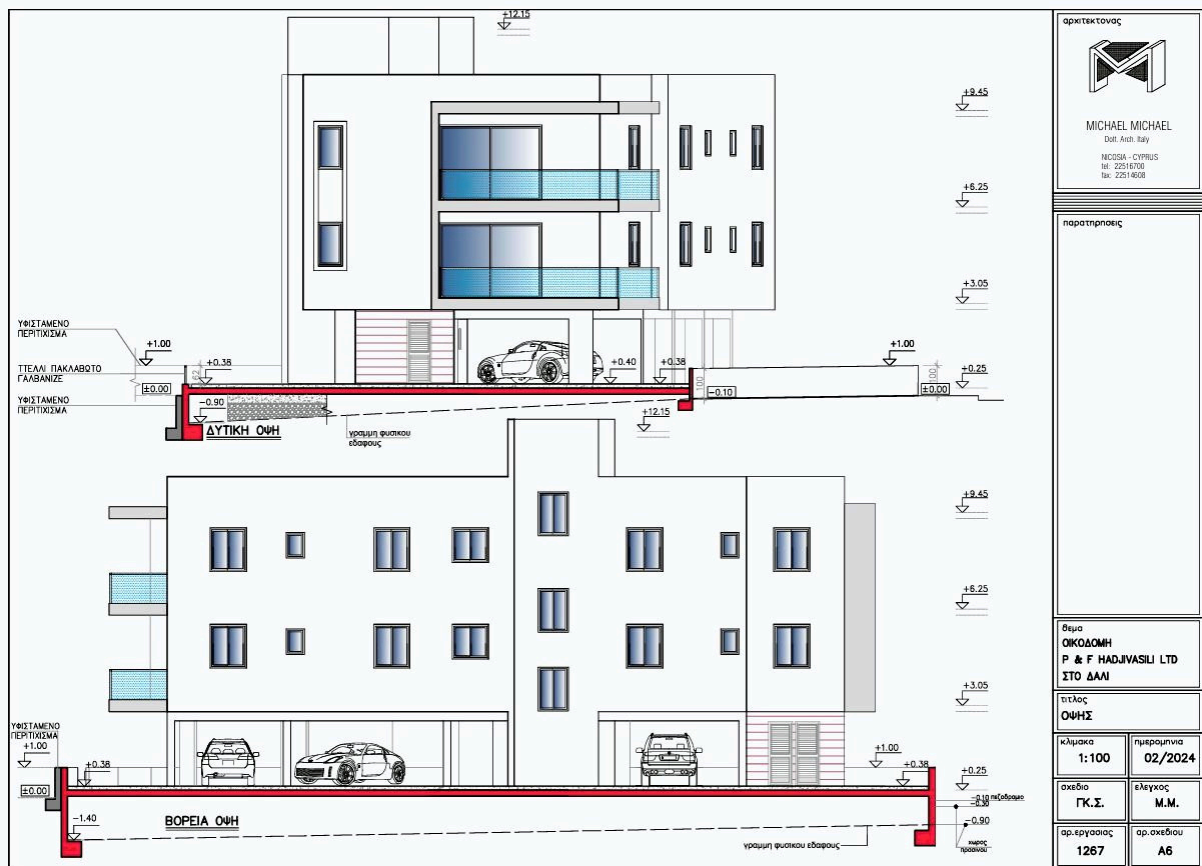
MICHAEL MICHAEL
 Dott. Arch. Italy
 ΝCCSIA - CYPRIOS
 №: 22516703
 №: 22516008

παράτηρησις

Όνομα
ΟΙΚΟΔΟΜΗ
P & F HADJIVASILU LTD
ΣΤΟ ΔΑΔΙ

Τίτλος
ΟΨΗΣ

κλίμακα 1:100	ημερομηνία 02/2024
σχεδία Γ.Σ.	έλεγχος Μ.Μ.
αριθμ. έργου 1267	αριθμ. σχεδίου A7



αρχιτεκτονός

MICHAEL MICHAEL
 Dott. Arch. Italy
 ΝCCSIA - CYPRIOS
 №: 22516703
 №: 22516008

παράτηρησις

Όνομα
ΟΙΚΟΔΟΜΗ
P & F HADJIVASILU LTD
ΣΤΟ ΔΑΔΙ

Τίτλος
ΟΨΗΣ

κλίμακα 1:100	ημερομηνία 02/2024
σχεδία Γ.Σ.	έλεγχος Μ.Μ.
αριθμ. έργου 1267	αριθμ. σχεδίου A6



Additional information

Facilities

Aircondition, Provision

Elevator

Heating, Provision

Parking, Covered

Solar water heater

Storage

Features

Balcony

Bright

Double glazing

Easy access to highway

Easy access to main roads

En suite shower

Fitted wardrobes

Laminate flooring

Near amenities

Near bus route

Next to green area

Contact us



Pavlos Konialis

 pavlos@totalviewhomes.com

