

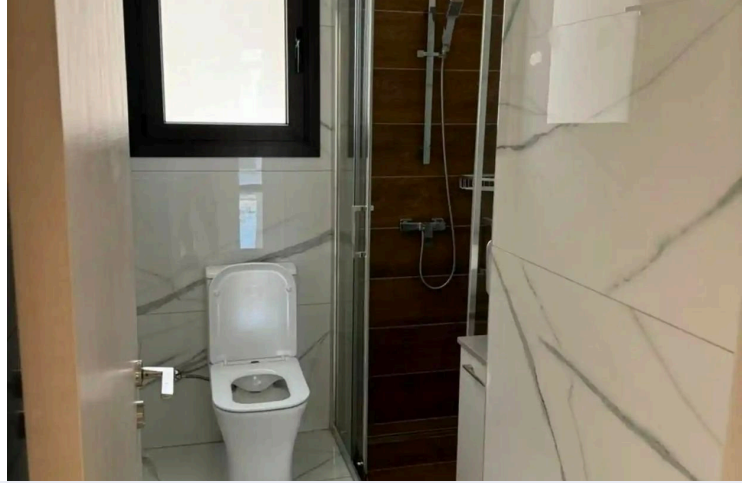
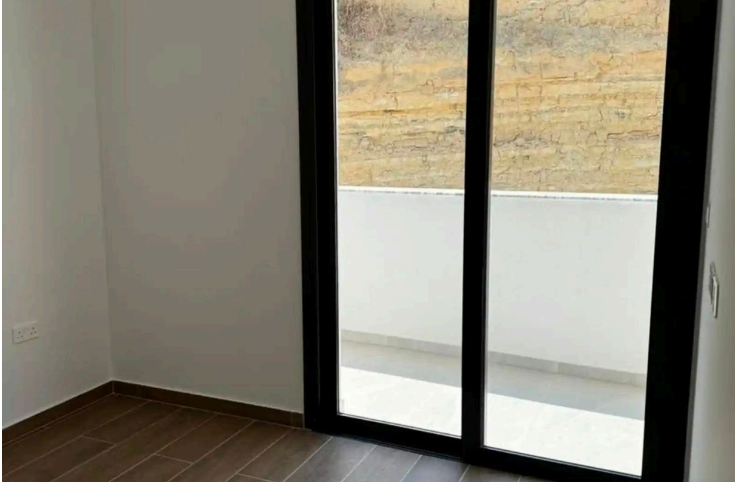
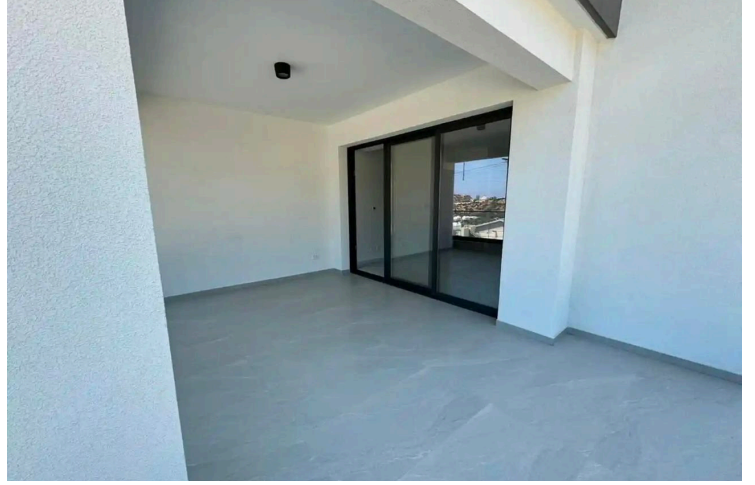
#1315

2-Bdroom luxury apartment

 Germasogeia, Limassol

€350,000





Overview

Specifications

Bedrooms

 2


Bathrooms

 2

Covered

 80 m²

Type	Apartment
Toilets	2
Plot	554 m²
Status	Completed

Year of construction	2024
Furnished	Unfurnished
Structure	Concrete
Energy efficiency rating	 A

Description

This three-story building is situated in the rapidly developing Germasogeia Village, offering a blend of tranquility and convenience. Surrounded by essential amenities, it provides a family-oriented and peaceful environment, ideal for upper-intermediate buyers, especially international clients.

Building Features

Boutique Design:

Only 6 apartments in total, with two 2-bedroom apartments on each floor.

Thoughtfully designed layouts with spacious verandas and ergonomic interiors.

Amenities & Specifications:

Security and Accessibility:

Provision for security surveillance.

Designated disabled parking space.

Safe doors and alarm system provisions.

Video Intercom System for enhanced security.

Comfort and Convenience:

Covered parking spaces and dedicated storage rooms.

Landscaped gardens for a serene atmosphere.

Energy Efficiency:



Additional information

Facilities

Aircondition, Split system

Elevator

Heating, Split system

Parking, Covered

Features

Alarm system

Balcony

Balcony, front

Distances

Amenities

 1 km

Sea

 3 km

Public transport

 500 m


Schools

 1 km

Contact us



Nikos Christoforou

 (+357) 99338966

 nikos.christoforou@totalserve.eu

