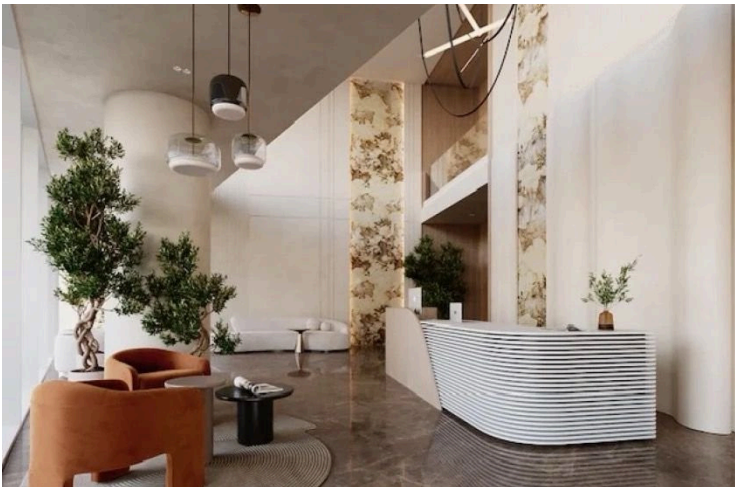
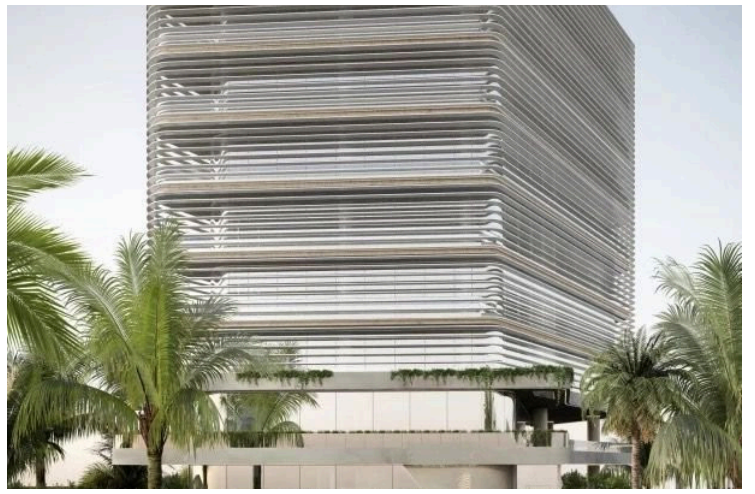


#1316

 Germasogeia, Limassol

€35,000 +VAT /month





Overview

Specifications

Covered

 196 m²

Type	Shop
Mezzanine	426 m²
Status	Under construction

Year of construction	2025
Energy efficiency rating	 A

Description

A modern business hub that redefines workspaces with exceptional design, functionality, and cutting-edge amenities. Strategically located in the heart of Germasogeia, Limassol, the development provides an inspiring environment for businesses seeking a premium address in Cyprus.

Key Features:

Exceptional Location: Situated in the vibrant Germasogeia district, offers fast access to the motorway, connecting it seamlessly to major cities and amenities.

Stunning Views: Panoramic glazing provides breathtaking views of the Mediterranean Sea, the mountains, and the city.

Modern Design: The Open Space architectural style ensures maximum flexibility, allowing businesses to tailor office layouts to meet their unique requirements.

Building Overview:

Total Area: 8,500 m²

Usable Area: 5,150 m²

Floors: 11 stories, featuring customizable office suites and flexible floor plans.

Parking: Two-level underground guarded parking for convenience and security.

Advanced Elevators: Equipped with KLEEMANN high-speed elevators, designed for low noise, high efficiency, and superior operating comfort.

Additional information

Facilities

Aircondition, Central system

Elevator

Gym

Heating, Central

Parking, Underground

Distances

Amenities

 100 m

Airport

 45 km

Sea

 1 km

Public transport

 100 m

Schools

 1 km

Resort

 3 km

Contact us



Pavlos Konialis

 pavlos@totalviewhomes.com