

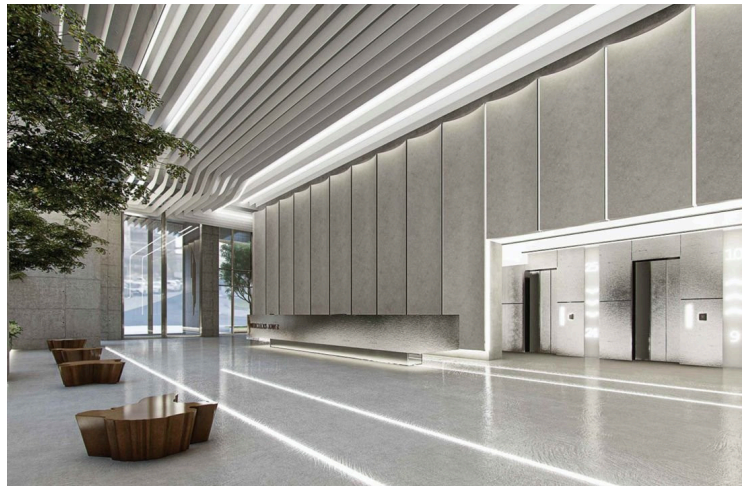
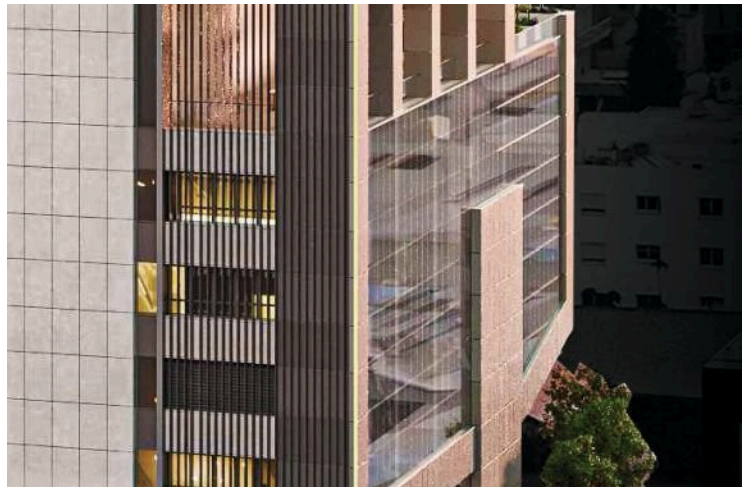
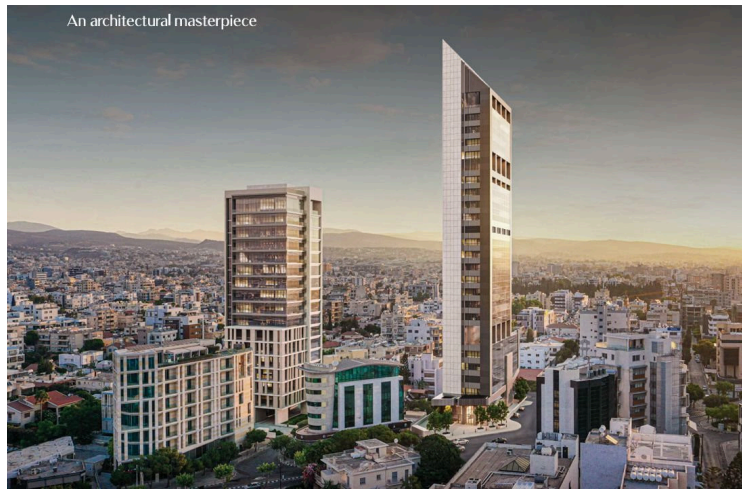
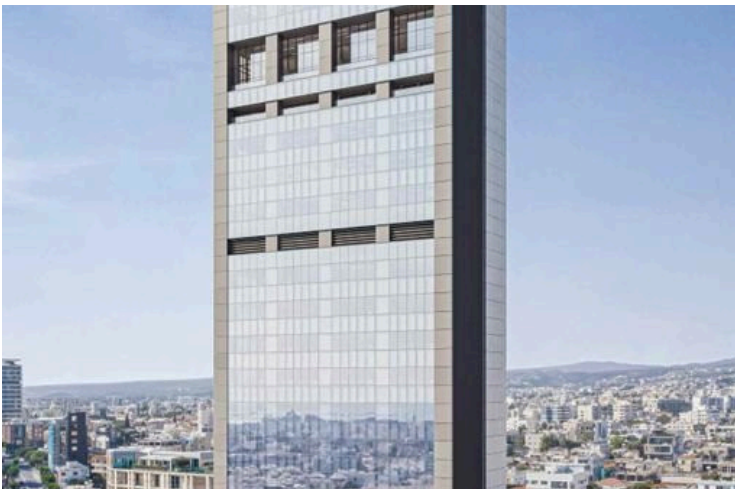
#1335

A Premium Business Destination in the Heart of Limassol- Office space of 285m² per floor

 Lemesos, Limassol

€20,500 +VAT /month





Overview

Specifications

Covered

 285 m²

Type **Office**

Status **Under construction**

Year of construction **2025**

Energy efficiency rating  **A**

Description

Discover a landmark commercial development designed to set a new standard for corporate excellence. Strategically located in Limassol's thriving business district, this state-of-the-art office space blends innovation, sustainability, and luxury, creating the ideal environment for businesses to thrive.

With only four floors remaining, this is an exclusive opportunity to establish your company in a high-profile commercial address that reflects your success and ambition.

Designed for Success

This exceptional business development is meticulously crafted to enhance productivity, collaboration, and well-being. The contemporary open-plan offices, averaging 285m² per floor, offer flexible layouts that can be tailored to meet the evolving needs of modern businesses.

- ? Expansive floor-to-ceiling windows flood the interiors with natural light, creating a bright and inspiring workspace.
- ? Breathtaking panoramic views of the Mediterranean Sea and Limassol's skyline enhance the workplace atmosphere.
- ? Premium finishes throughout, including raised flooring for easy customization and suspended ceilings for superior acoustics.

Innovative & Smart Workspaces

This Grade A business development is designed with cutting-edge technology and sustainability at its core, ensuring a high-performance and energy-efficient workplace.

- ? Advanced Infrastructure – High-speed fiber-optic internet, smart building automation, and intelligent energy management systems.
- ? Top-Tier Security – 24/7 security personnel, CCTV surveillance, access control, and secure parking.
- ? Sustainable & Energy-Efficient Design – Featuring solar panels, energy-efficient glazing, thermal insulation, and



Additional information

Facilities

Aircondition, Central system

Elevator

Parking, Underground

Storage

Features

24-hour security

Alarm system

Automation system

Concierge

Double glazing

Earthquake-resistant structure

Easy access to main roads

Excellent condition

Fireproof entrance doors

Floor-to-ceiling windows

Handicap accessible

Heart of city center

Lobby

Meeting room

Panoramic view

Distances

Amenities

 100 m

Airport

 40 km

Sea

 1 km

Schools

 500 m

Contact us



Pavlos Konialis

 pavlos@totalviewhomes.com

