

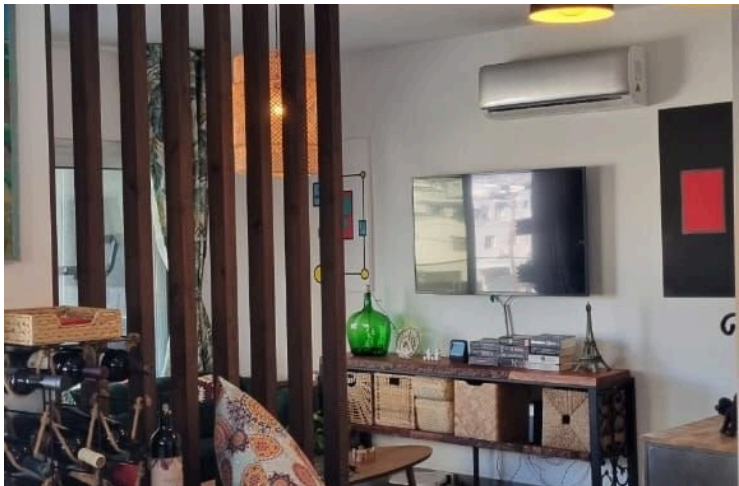
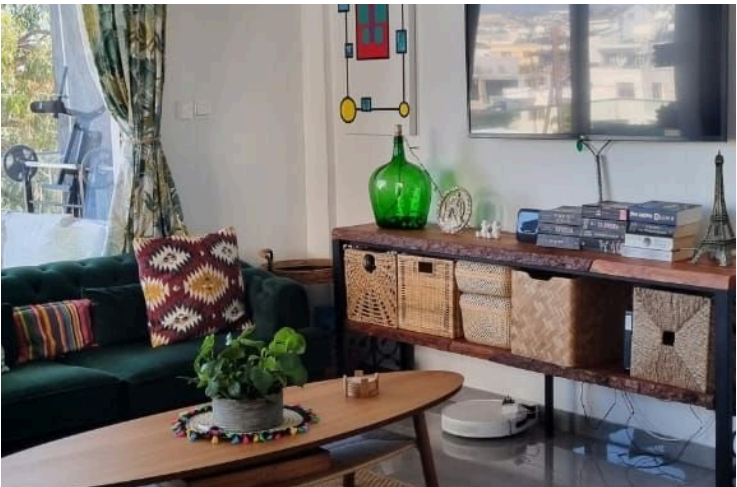
#1336

2-Bedroom Modern Apartment in Limassol

 Kato Polemidia, Limassol

€315,000





Overview

Specifications

Bedrooms

 2

Bathrooms

 2

Covered

 110 m²

Type

Apartment

Toilets

2

Status

Resale

Year of construction

2021

Furnished

Fully furnished

Energy efficiency rating

 **A**

Description

An excellent opportunity to own a spacious and stylish 2-bedroom apartment on the second floor of a boutique building with only six apartments.

Prime location with direct access to Spyrou Kyprianou Avenue and close to all necessary amenities.

Property Details

Indoor space: 90 sqm

Covered veranda: 20 sqm

Covered parking: 12 sqm

Storage room: 3 sqm

Total area: approximately 125 sqm

Key Features

Fully furnished with high-quality furniture and electrical appliances

Two bathrooms, including one en suite

Electric shutters for added comfort and privacy

Smart video entrance for security and convenience

Video security cameras for enhanced safety

Title deed available and ready for transfer

Built in mid-2021 with modern construction

No VAT, saving on additional costs

A perfect residential or investment opportunity in a strategic location of Limassol.



Additional information

Facilities

Aircondition, Split system

Elevator

Features

Balcony

Distances

Amenities



100 m

Sea



2 km

Public transport



100 m

Schools




1 km

Contact us



Christos Sofokleous

 (+357) 95512720

 chris@totalviewhomes.com

