



#1343

1 Bedroom Prestigious Apartment

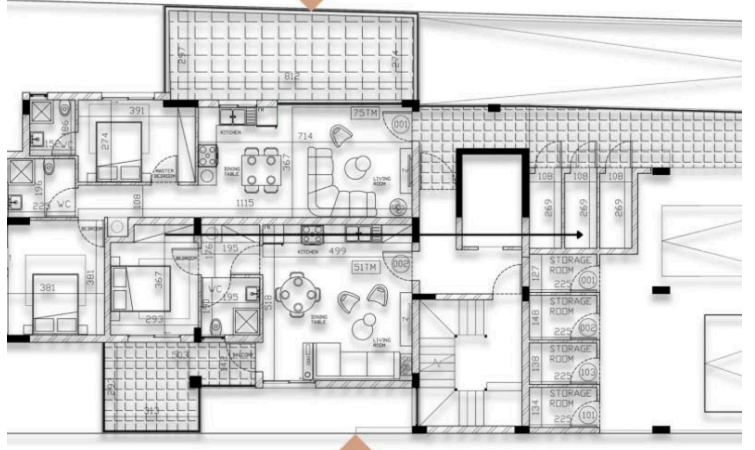
 Petrou Kai Pavlou, Limassol

€200,000





APARTMENT 001 - TWO BDR
 Internal Area = 75m² Uncovered Veranda = 27m²



APARTMENT 002 - ONE BDR
 Internal Area = 51m² Uncovered Veranda = 11m² Covered Veranda = 11m²

R



Overview

Specifications

Bedrooms



Bathrooms



Covered

62 m²

Type	Apartment
Toilets	1
Status	Off plan

Year of construction	2027
Structure	Concrete

Description

Discover an exclusive boutique residence offering a luxurious lifestyle in the vibrant Petrou & Pavlou area of Limassol. This brand-new development features only 8 apartments, ensuring privacy, comfort, and a high-quality living experience.

Apartment Features

1 Bedroom & 1 W/C

Internal Area: 50m²

Covered Veranda: 9m² – ideal for relaxation and outdoor enjoyment

Private Parking & Storage Room for added convenience

Energy Efficiency Rating: A – promoting sustainability and cost savings

Modern & Smart Living

Provision for Air Conditioning for a comfortable home environment

Provision for Photovoltaics for energy efficiency and lower bills

Door Phone System for security and ease of access

Remote-Controlled Parking Bar for residents' exclusive use

Prime Location & Lifestyle

Situated in the heart of Limassol, this sophisticated boutique residence offers easy access to shops, restaurants, business hubs, and essential amenities, making it an ideal choice for professionals, couples, and investors.

With its exclusive design, high-end finishes, and prime location, this 1-bedroom apartment is a rare opportunity to own a home in one of Limassol's most desirable areas.



Additional information

Facilities

Aircondition, Split system

Elevator

Gated complex

Features

Alarm system

Attic

Balcony

CCTV

Distances

Amenities

 100 m

Sea

 1 km

Public transport

 100 m

Schools

 200 m

Contact us



Christos Sofokleous

 (+357) 95512720

 chris@totalviewhomes.com

