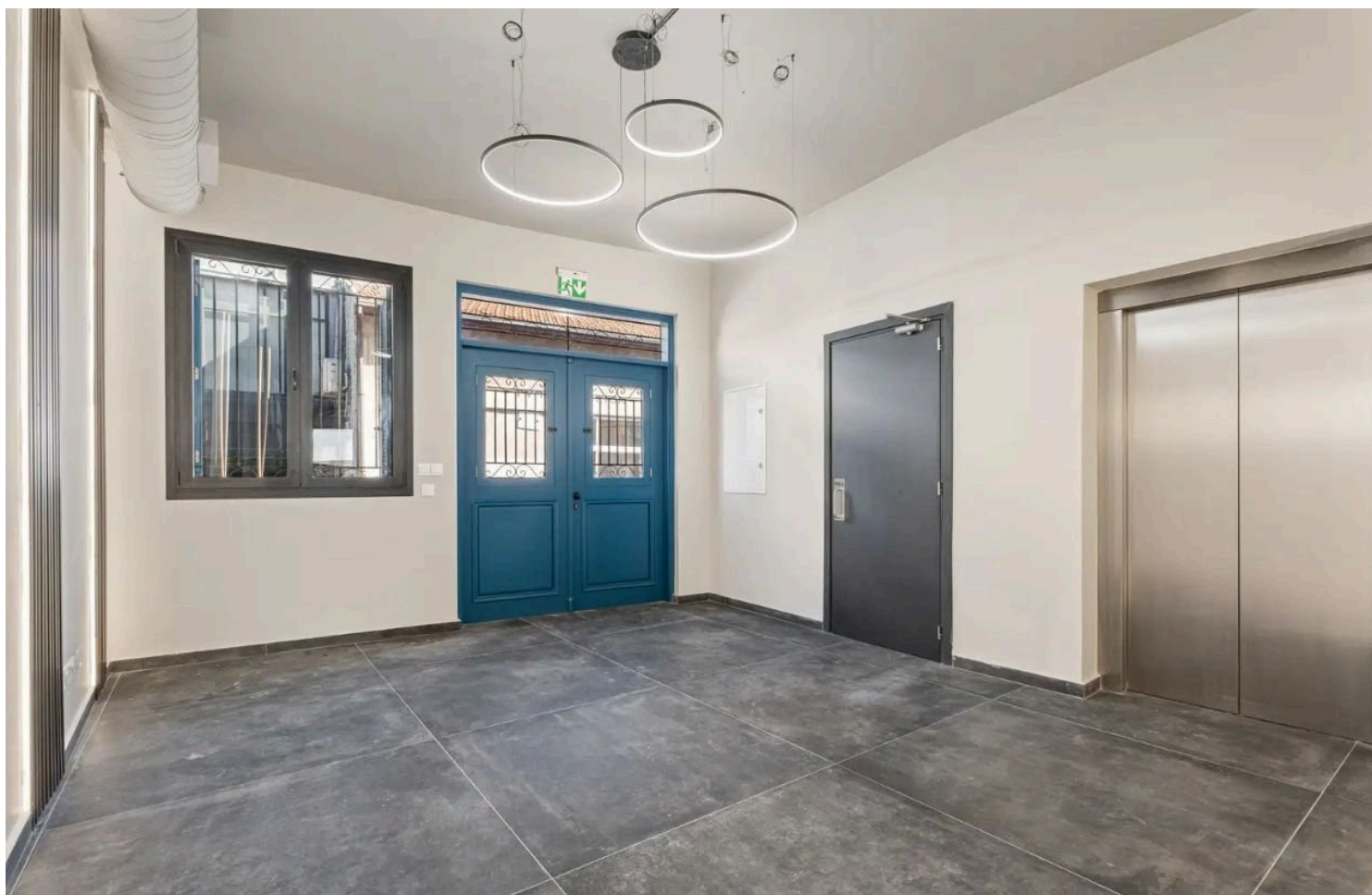


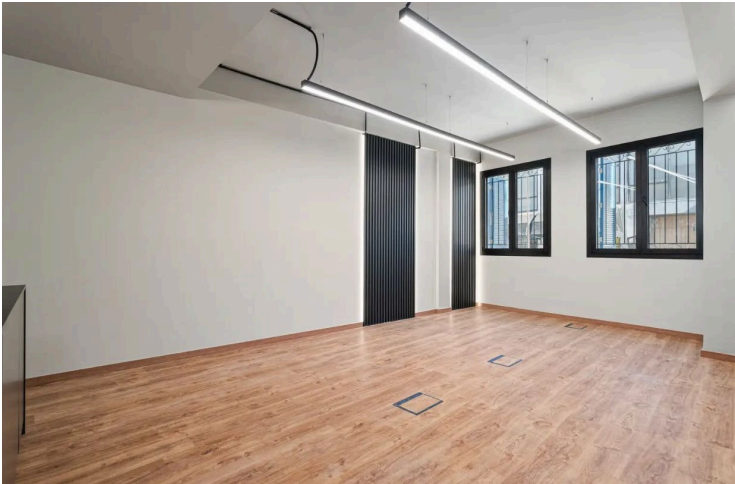
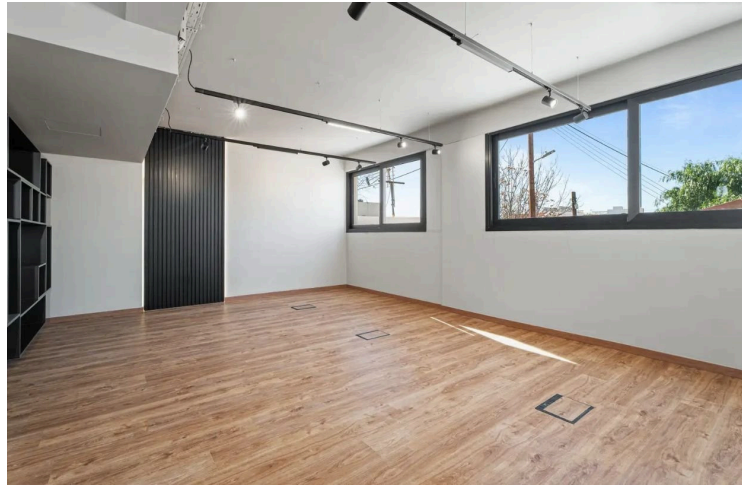
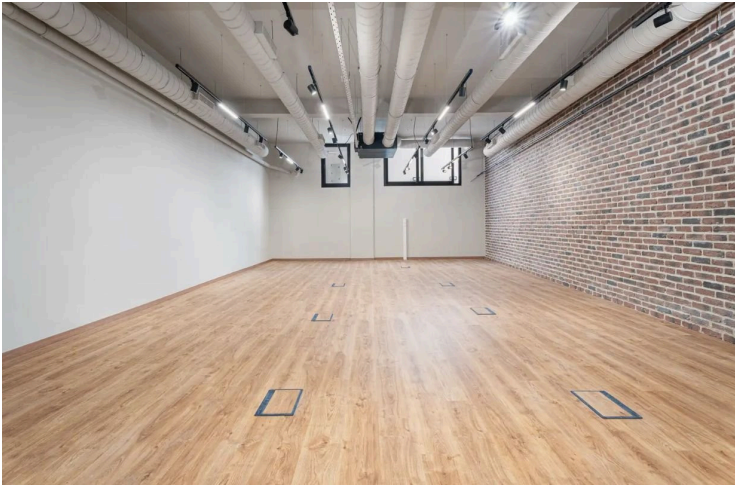
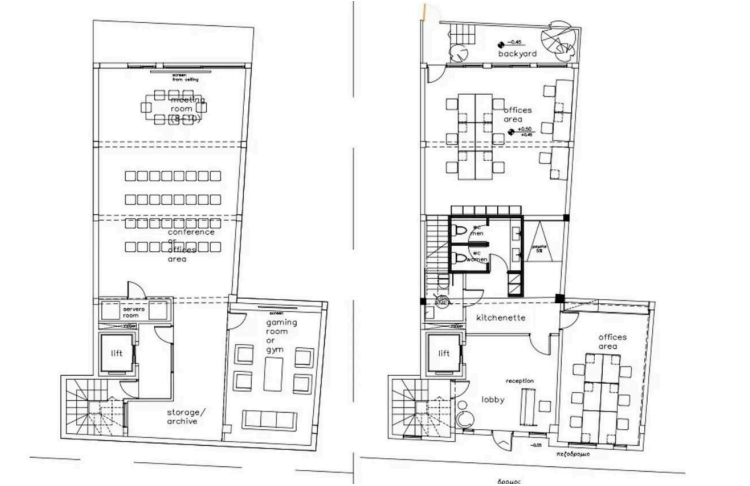
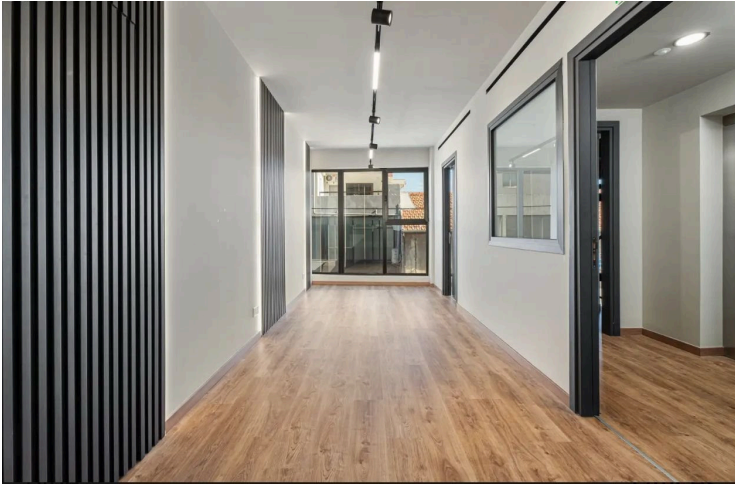
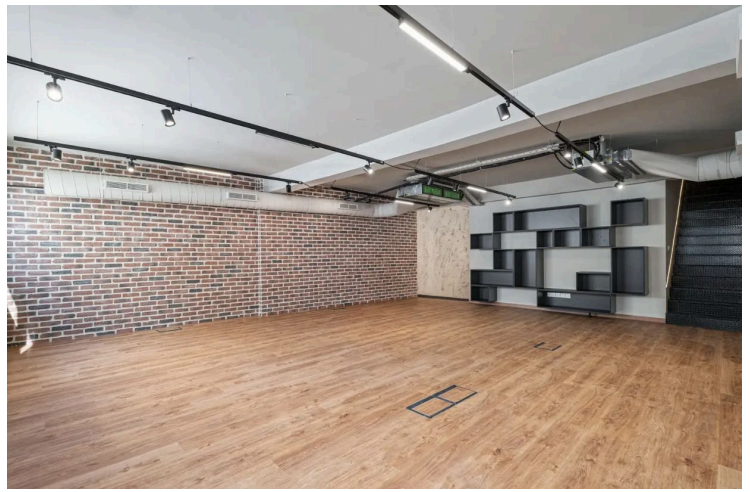
#1363

Offices in town center 300-600sqm with parking

 Historical Center, Limassol

€18,000 /month





Overview

Specifications

Covered

 600 m²

Type

Office

Energy efficiency rating

 **B+**

Plot

182 m²

Description

This renovated office building, centrally located in the heart of the city, is available for immediate rental. This modern property consists of four levels: a basement, a ground floor (which includes a small back garden), a mezzanine, and a first floor. Each floor measures approximately 150 sqm, totaling 600 sqm of available space. Additionally, a spacious roof garden, featuring a BBQ area, pergola, toilet and shower room, and artificial grass, is included (though it is not counted in the total square footage).

The building offers flexible rental options, allowing it to be leased in its entirety or as two separate office spaces. One tenant can occupy the basement and ground floor, while another can lease the mezzanine and first floor. Tenants will share access to a common lobby, elevator, ground floor entrance, and the roof garden, creating a collaborative and flexible work environment.

Key Features:

- Total area: 600 sqm across four floors (150 sqm per floor)
- Open-plan design with an industrial style
- Kitchen and toilet facilities on every floor
- Conference room available
- Rooftop garden with BBQ area, pergola, and shower facilities
- Available parking spaces
- Access to shared lobby, elevator, and ground floor entrance

Lease Terms:

- Minimum lease duration: 3 years
- 3 months' rent in advance required as a downpayment
- Price: €29.00 per sqm, plus VAT

Additional information

Facilities

Elevator

Storage

Features

Alarm system

Distances

Amenities



100 m

Sea



300 m

Public transport



100 m

Schools



500 m

Contact us



Pavlos Konialis

 pavlos@totalviewhomes.com