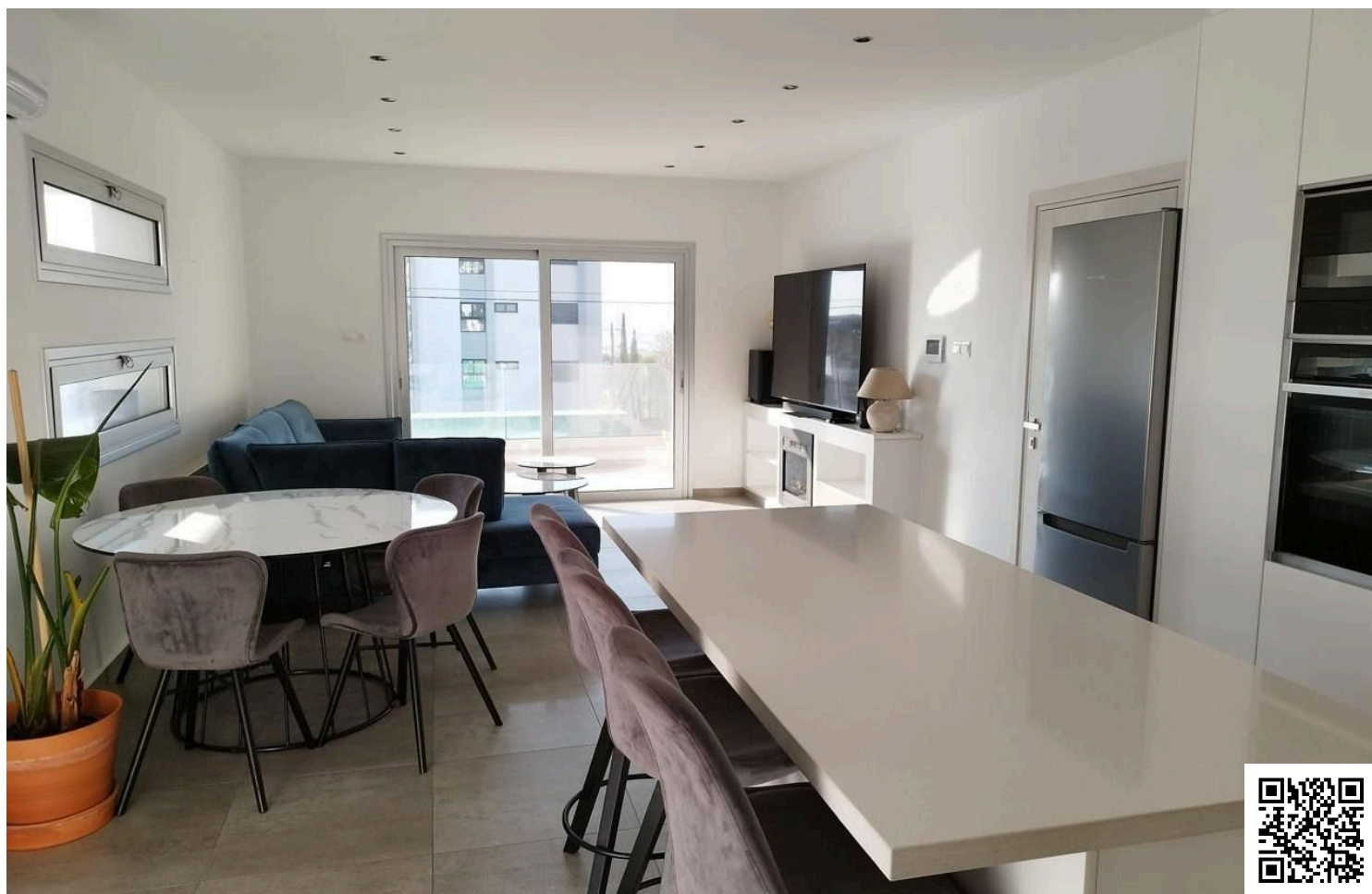


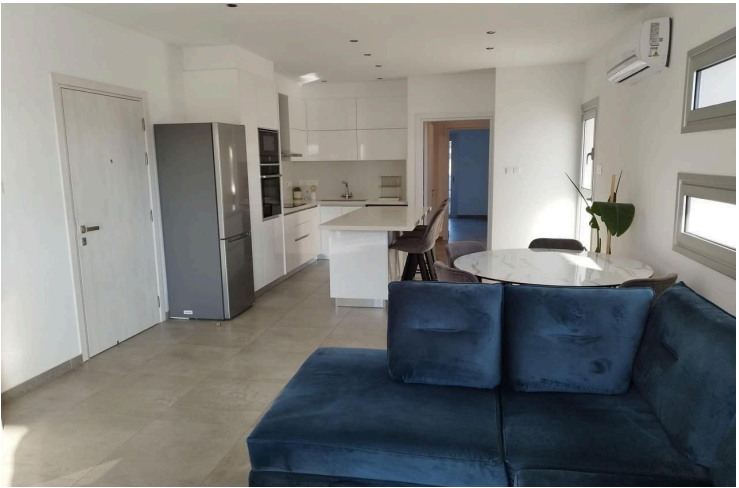
#1386

Modern 2-Bedroom Furnished Apartment for Rent in Panthea – €1700/ Month

 Panthea, Limassol

€1,700 /month





Overview

Specifications

Bedrooms


 2

Bathrooms

 2

Covered

 80 m²

Type	Apartment	Year of construction	2021
Showers	2	Energy efficiency rating	 B+
Status	Used		

Description

Discover contemporary living in this stylish 2-bedroom apartment located in Panthea, perfectly positioned between Ayia Fyla and Mesa Geitonia roundabout. Offering 80 sqm of indoor space and an impressive 40 sqm outdoor area, this home is ideal for those seeking comfort and convenience.

- ? Fully furnished with modern decor
- ? A/C units in all rooms for year-round comfort
- ? Central heating for cozy winters
- ? Spacious outdoor area perfect for relaxation
- ? Built in 2021 – modern and energy-efficient

Situated in a prime residential area with easy access to the highway, city center, and essential amenities.

? Rent: €1700 per month

For more information or to arrange a viewing, contact us today!



Additional information

Facilities

Aircondition, Split system

Heating, Split system

Elevator

Parking, Covered

Gated complex

Storage

Features

Balcony

Double glazing

En suite shower

Modern design

Shutters, electric

Ceramic tiles

Easy access to highway

Energy efficient doors/windows

Near amenities

Combined kitchen and dining area

Easy access to main roads

Entrance gate, automated

Quiet area

Distances

Amenities



300 m

Airport



40 km

Sea



3 km

Public transport



200 m

Schools



500 m

Resort



5 km

Contact us



Pavlos Konialis

 pavlos@totalviewhomes.com

