

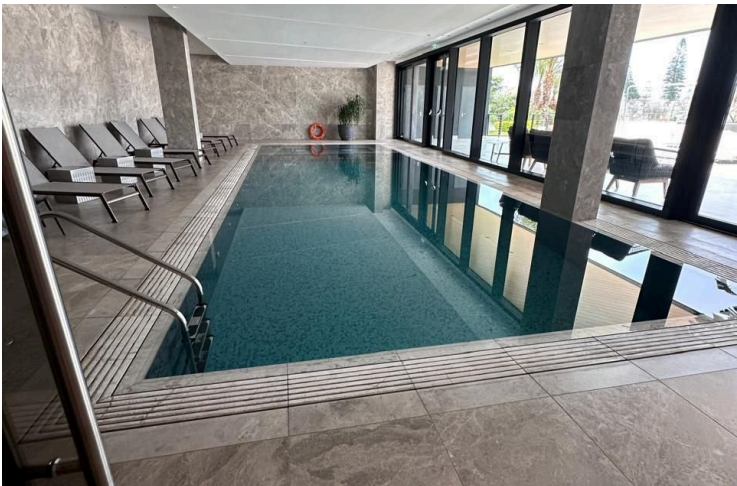
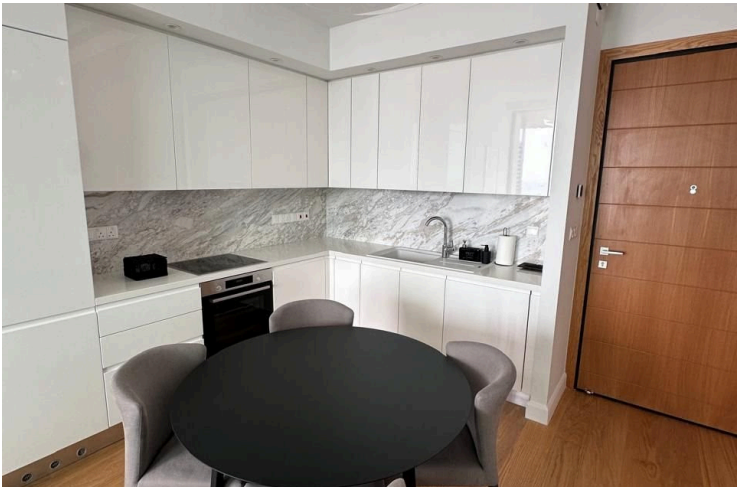
#1389

Luxury 2-Bedroom Apartment for Rent in Landmark High-Rise – Limassol Tourist Area

 Germasogeia Tourist Area, Limassol

€5,500 /month





Overview

Specifications

Bedrooms

 2

Bathrooms

 2

Covered

 80 m²

Type **Apartment**

Toilets **2**

Year of construction **2021**

Furnished **Fully furnished**

Communal charge **€500**

Communal charge frequency **Monthly**

Description

Experience elite coastal living in this exceptional 2-bedroom apartment, located in one of Limassol's most iconic residential towers. With approximately 80m² of internal space and an additional 20m² of covered veranda, this home blends modern luxury, breathtaking views, and world-class amenities in a prime location.

Key Features:

- Spacious open-plan living area
- 2 elegant bedrooms
- High ceilings (3.15m)
- Premium finishes and materials
- Expansive covered veranda with partial sea and city views

Exclusive Resident Amenities:

- 24/7 Concierge
- Indoor heated pool & outdoor pool
- SPA & wellness centre
- Fully equipped gym & tennis court
- Landscaped green areas
- Underground parking
- Secure gated entrance

Prime Location:

- Just steps from Limassol's best sandy beaches
- Walking distance to fine dining, boutiques, and entertainment
- Located in the heart of the tourist area with easy access to the city centre



Additional information

Facilities

Aircondition, Central system

Elevator

Indoor pool, Communal

Parking, Underground

Sauna

Tennis court

Childrens playground

Gated complex

Landscaped garden

Pergola

Solar water heater

Clubhouse

Heating, Underfloor

Outdoor shower

Pool, Communal

Spa

Features

24-hour security

Bicycle parking

Combined kitchen and dining area

Double glazing

Electric car charger

Entrance gate, automated

Garden, large

Luxury specifications

Near bus route

Sea view

Balcony

Bright

Concierge

Easy access to highway

En suite bathroom

Fitted wardrobes

Granite countertops

Modern design

Next to green area

Walking distance to beach

Bar

CCTV

Connected to electric mains

Easy access to main roads

En suite shower

Floor-to-ceiling windows

Kitchen appliances

Near amenities

Panoramic view

Distances

Amenities

 100 m

Airport

 40 km

Sea

 200 m

Public transport

 100 m

Schools

 1 km

Resort

 2 km



Contact us



Pavlos Konialis

 pavlos@totalviewhomes.com

