

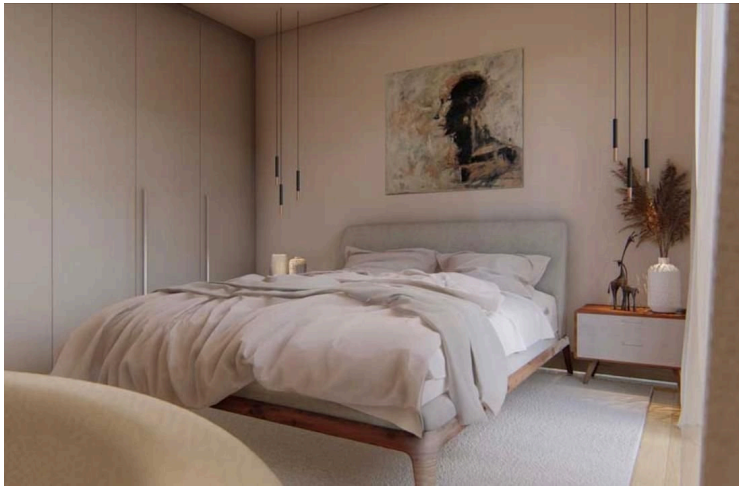
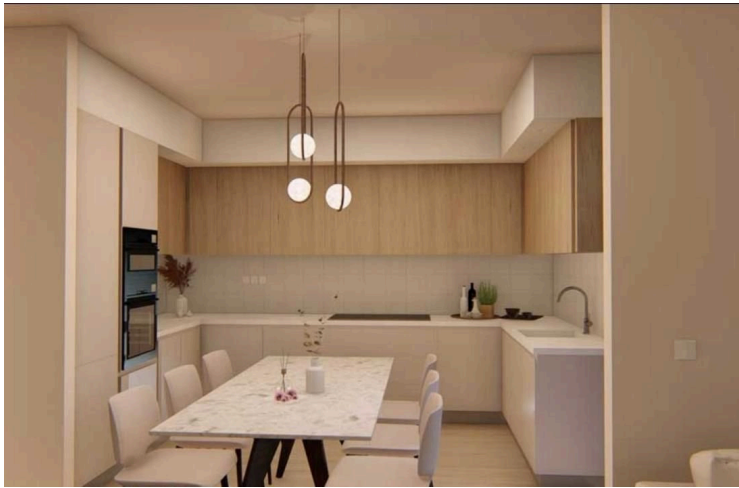
#1447

Luxury Two Bedroom Apartment under construction in Zakaki with Pool and Gym

 Zakaki, Limassol

€440,000 +VAT





Overview

Specifications

Bedrooms		Bathrooms		Covered	
 2		 2		 84 m ²	
Type		Apartment			
Toilets		1			
Status		Under construction			
Year of construction		2025			
Furnished		Unfurnished			
Energy efficiency rating		 A+			

Description

Contemporary Design • Exceptional Lifestyle • Prime Location

Discover a stunning new residential development nestled in a prestigious and rapidly growing area of Zakaki Limassol. This thoughtfully planned complex offers a mix of one, two, and three-bedroom apartments, each tailored to enhance modern living.

Key Highlights

Spacious Living Zones – Open-plan layouts with generous lounge and dining spaces designed for entertaining or quiet family life

Panoramic Sea Views – Floor-to-ceiling windows frame breathtaking vistas and flood interiors with natural light

Top-Tier Finishes – Premium laminated parquet in living areas, ceramic tiles in bathrooms, high-end kitchen cabinets, thermal double-glazed aluminum frames, reinforced security and fire-proof entry doors

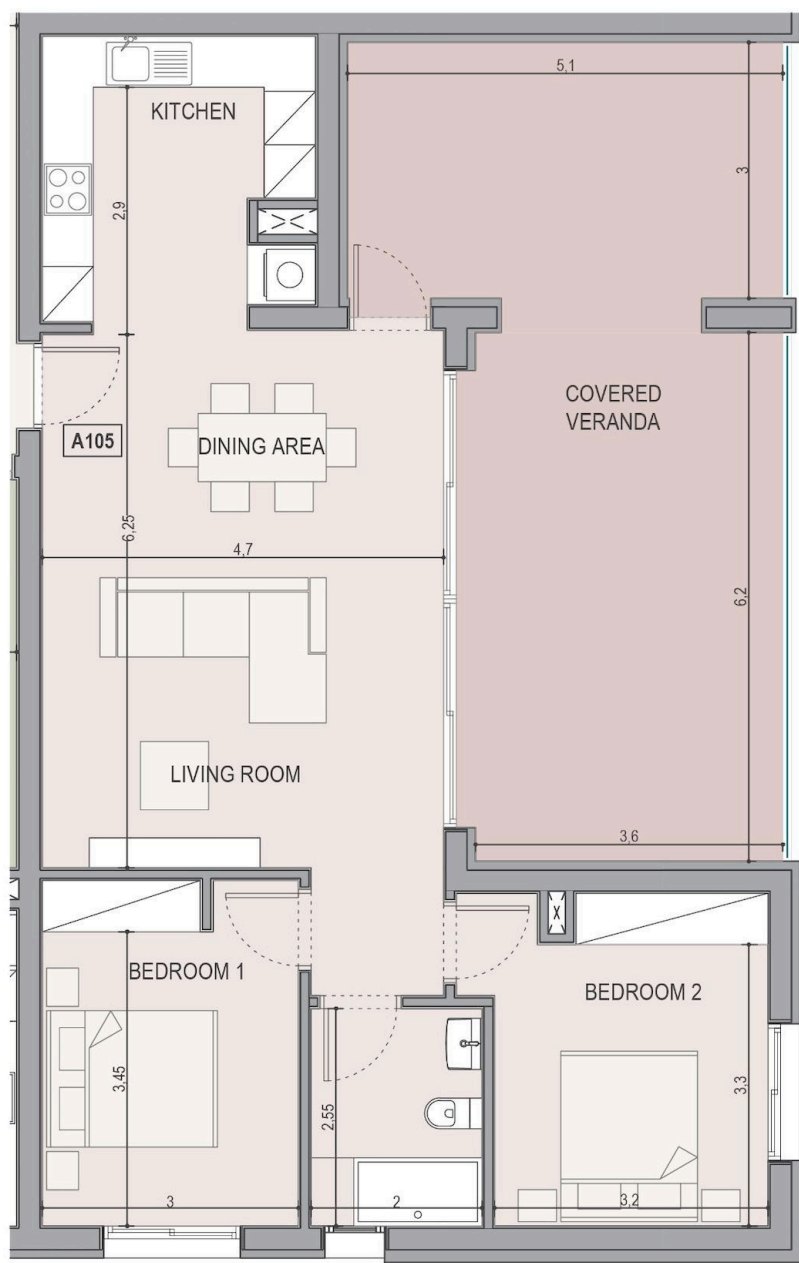
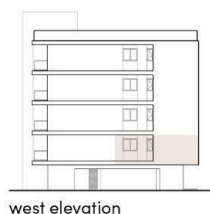
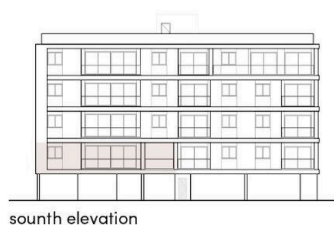
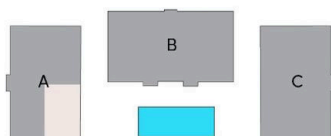
Underfloor Heating & A/C – Provisioned for modern, energy-efficient comfort with VRV and split systems ready for installation .

Sauna & Gym Onsite – Relax and rejuvenate in communal wellness areas, including a pool, sauna, and fully equipped fitness suite

Secure Living – Gated access, 24/7 security features, alongside underground parking and dedicated storage spaces.

Floor plans

block A apartment A105



Additional information

Facilities

Aircondition, Provision

Gym

Pool, Communal

Elevator

Heating, Provision

Solar water heater

Gated complex

Parking, Uncovered

Features

Balcony

Ceramic tiles

Easy access to highway

Luxury specifications

Bicycle parking

Combined kitchen and dining area

Easy access to main roads

Near amenities

Bright

Double glazing

Entrance gate, automated

Near bus route

Distances

Amenities



200 m

Airport



40 km

Sea



500 m

Public transport



100 m

Schools



2 km

Resort



3 km

Contact us



Pavlos Konialis

 pavlos@totalviewhomes.com

