

#1531

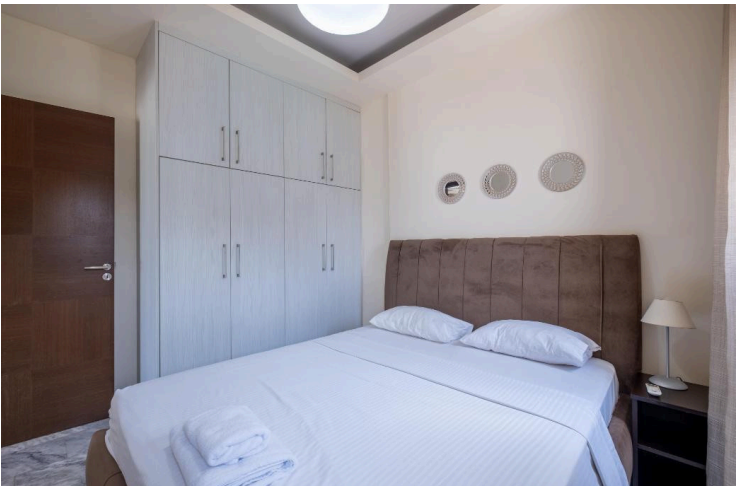
# 2-bedroom apartment in Latchi, Paphos

 Latchi, Paphos

**€122,000**







# Overview

## Specifications

Bedrooms


 2

Bathrooms

 1

Covered

 57 m<sup>2</sup>

Type	<b>Apartment</b>	Furnished	<b>Partially furnished</b>
Showers	<b>1</b>	Energy efficiency rating	 <b>Certificate expected</b>
Status	<b>Resale</b>		

## Description

The property is 2-bedroom apartment (B14) in Latchi. It is part of a resort comprising 59 apartments in total (studios, 1 bedroom and 2 bedroom apartments). The resort is located on the edge of the Akamas peninsula natural reserve. It is only a 3 minute drive to Latchi beach and just a short drive from Polis Chrysochous, Latchi harbour and historical attractions.

The apartment has a covered area of 57sqm and covered verandas of 11sqm. It is situated on the upper floor of Block B. It consists of an open plan area with kitchenette, sitting area, two bedrooms and a bathroom with toilet.

The resort currently features an outdoor swimming pool with bar, an indoor saltwater pool and a sauna with indoor pool.

The property is a unique opportunity to acquire your investment or holiday apartment by the sea.

The apartment does not have a separate title deed. Sale to be effected through a Sales and Purchase agreement which will be deposited at the LRO.



# Additional information

## Facilities

Aircondition, Split system

Heating, Split system

Parking, Uncovered

Childrens playground

Indoor pool, Communal

Pool, Communal

Gated complex

Landscaped garden

Sauna

## Features

Balcony

Combined kitchen and dining area

Below market value

Double glazing

Ceramic tiles

Sea view

## Distances

Amenities

 2 km

Airport

 57 km

Sea

 1 km

Public transport

 3 km

Resort

 1 km

## Contact us



**Pavlos Konialis**

 [pavlos@totalviewhomes.com](mailto:pavlos@totalviewhomes.com)

