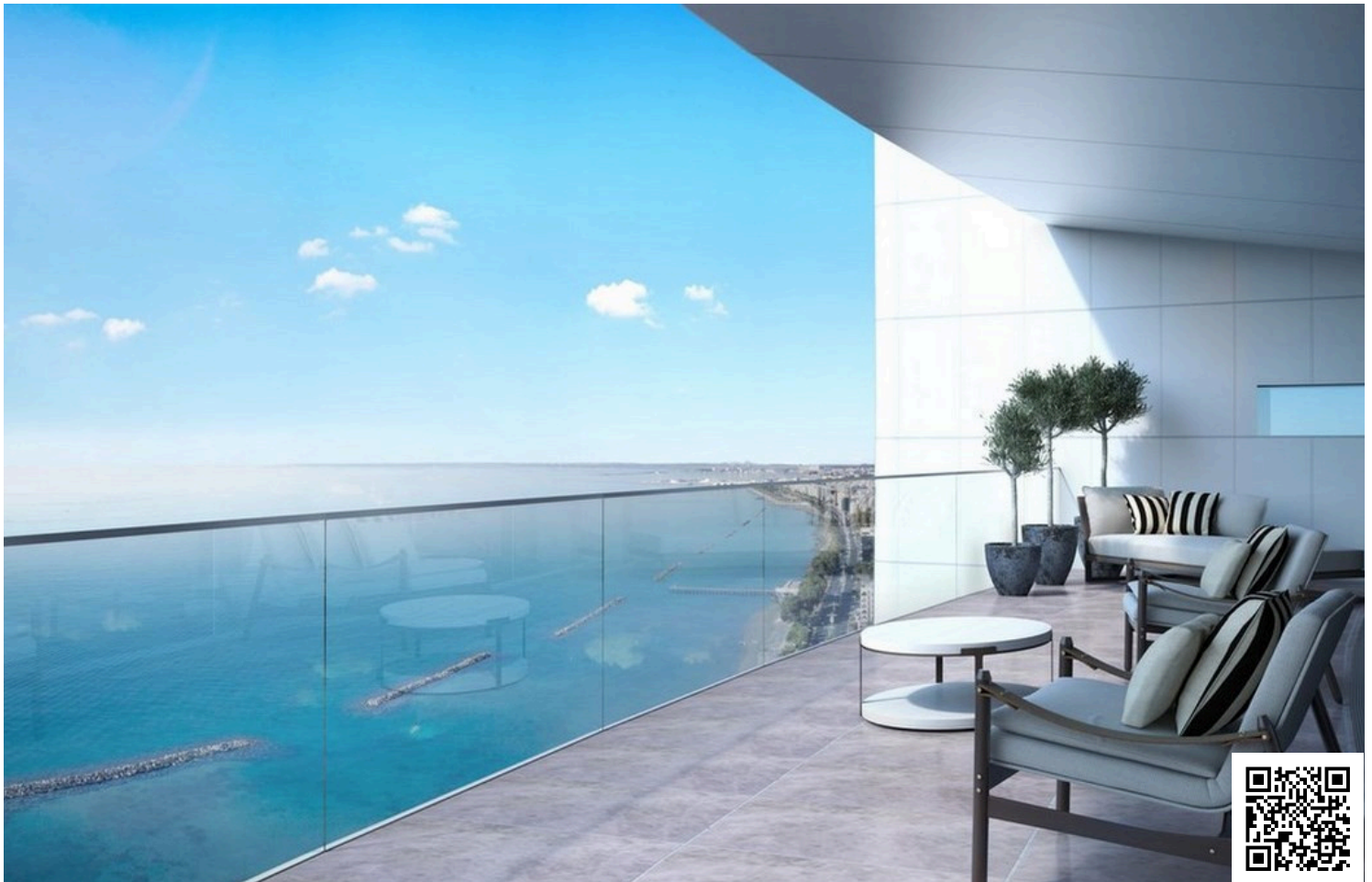


#1534

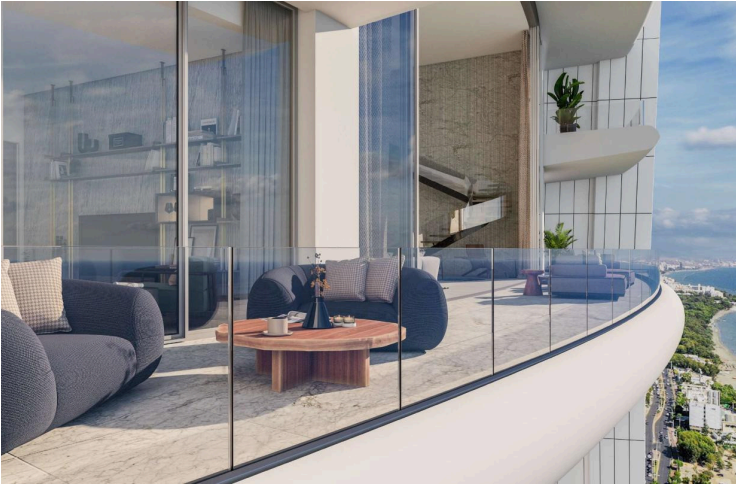
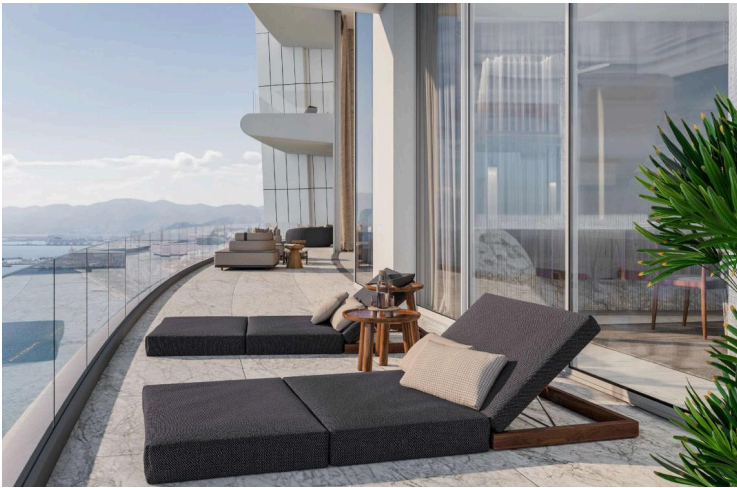
# Sky Home with Panoramic Views – 3 Bedrooms

 Lemesos, Limassol

**€3,050,000** +VAT









# Overview

## Specifications

Bedrooms

 3

Bathrooms

 2

Covered

 150 m<sup>2</sup>

Type	Apartment
------	-----------

Showers	2
---------	---

Toilets	3
---------	---

Status	Completed
--------	-----------

Year of construction	2023
----------------------	------

Energy efficiency rating	 A
--------------------------	---

## Description

With open-plan grace and radiant finishes, this unique and elegant sky home sets a new standard of superior quality living.

Floor-to-ceiling windows frame breathtaking 270-degree views, seamlessly extending onto a deep, covered veranda of 30 m<sup>2</sup>. From this elevated retreat, you'll take in awe-inspiring vistas of the city skyline, the mountains, the vast Mediterranean Sea, and the curve of the horizon.

The 150 m<sup>2</sup> internal space is designed with a contemporary flow, blending sophistication and comfort. The spacious living environment feels effortless, while the three generously sized bedrooms—quietly positioned at the back—offer sweeping city and mountain views.

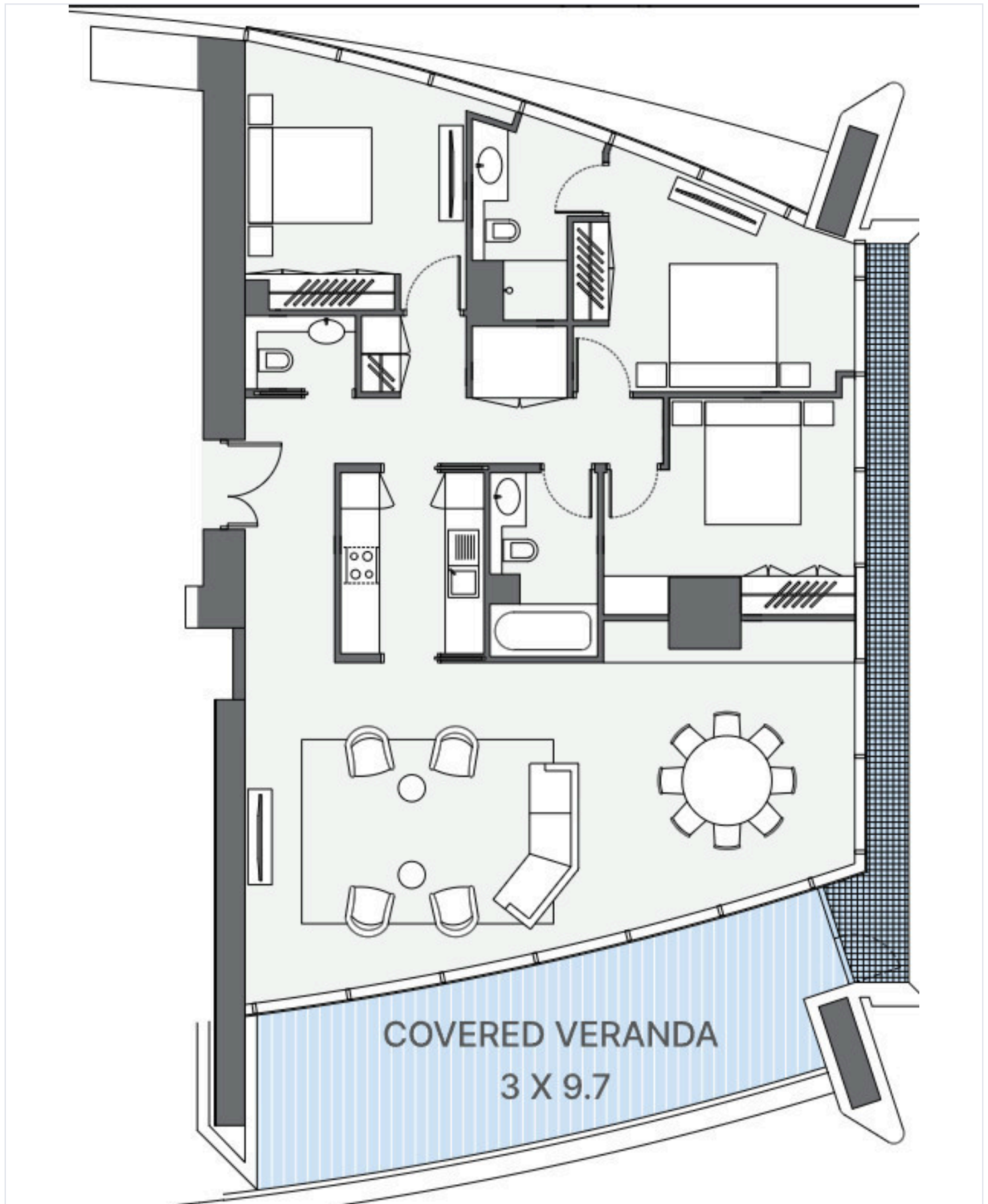
Every detail radiates warmth and elegance: underfloor heating, a concealed VRV system, and fine parquet flooring create a refined ambiance year-round.

A truly rare opportunity, this sky home combines architectural beauty with an unparalleled lifestyle.

Asking Price: €3,050,000 + VAT



# Floor plans



# Additional information

## Facilities

Aircondition, Central system  
Gym  
Parking, Underground  
Solar photovoltaic panels  
Storage

Elevator  
Heating, Underfloor  
Pool, Communal  
Solar water heater

Gated complex  
Landscaped garden  
Sauna  
Spa

## Features

24-hour security  
Bar  
CCTV  
Double glazing  
Entrance gate, automated  
Floor-to-ceiling windows  
Jacuzzi  
Marble stairs  
Panoramic view  
Sea view  
Smart home automation

Alarm system  
Barbeque  
City view  
Easy access to main roads  
Entrance hall  
Garbage disposal  
Luxury specifications  
Near amenities  
Roof garden  
Separate dining area  
Walk-in closet

Balcony  
Bright  
Concierge  
En suite shower  
Fitted wardrobes  
Granite countertops  
Marble flooring  
Near bus route  
Sea front  
Shower  
Walking distance to beach

## Distances

Amenities

 100 m

Airport

 39 km

Sea

 100 m

Public transport

 100 m

Schools

 2 km

Resort

 400 m



# Contact us



**Pavlos Konialis**

 [pavlos@totalviewhomes.com](mailto:pavlos@totalviewhomes.com)

