

#1539

Brand New Residential Building for Rent – Potamos Germasogeias

 Germasogeia, Limassol

€15,000 /month





Overview

Specifications

Bedrooms

 12

Bathrooms

 12

Covered

 650 m²

Type

Apartment Building

Toilets

12

Status

Key ready

Year of construction

2025

Energy efficiency rating

 **A**

Description

A modern residential building available for rent as a whole, offering an excellent opportunity for companies seeking high-quality accommodation for their employees.

Location: Potamos Germasogeias, close to Christaki Kranou Avenue with easy access to the highway and main roads.

Property Features:

6 spacious two-bedroom apartments, each with 2 bathrooms

Each apartment is approximately 80 m² internal area plus 25 m² covered veranda

Offered fully furnished and equipped with all essential electrical appliances

Photovoltaic system installed for every apartment, ensuring energy efficiency

Bright interiors with modern design and high-quality finishes

Large communal roof garden with unobstructed views

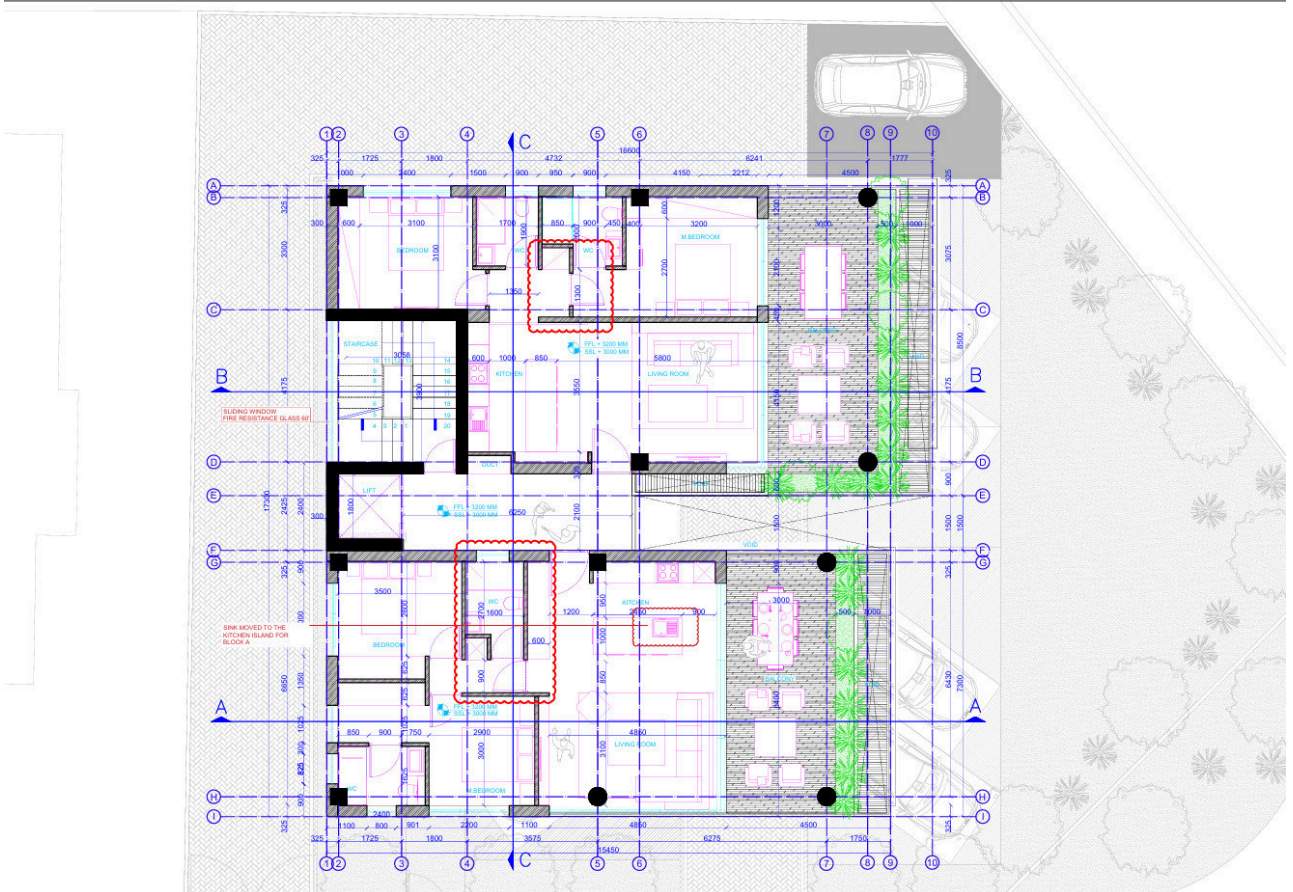
Energy-efficient and designed for comfortable living

Highlights:

Prime residential location close to all amenities



Floor plans



Additional information

Facilities

Aircondition, Split system

Landscaped garden

Storage

Elevator

Parking, Covered

Gated complex

Solar photovoltaic panels

Features

Balcony

Bright

Combined kitchen and dining area

Easy access to highway

Energy efficient doors/windows

Luxury specifications

Veranda, front

Balcony, front

Ceramic tiles

Corner

Easy access to main roads

Entrance gate

Modern design

Barbeque

City view

Double glazing

En suite shower

Floor-to-ceiling windows

Sea view

Distances

Amenities

 100 m

Airport

 35 km

Sea

 2 km

Public transport

 200 m

Schools

 3 km

Resort

 3 km

Contact us



Pavlos Konialis

 pavlos@totalviewhomes.com

