

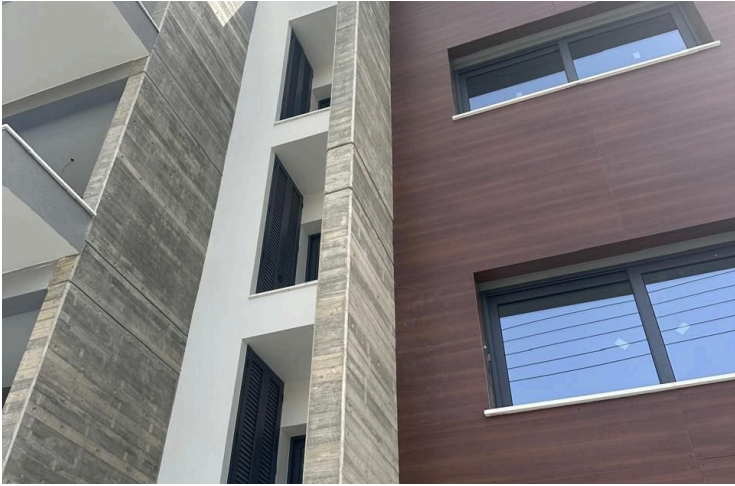
#1603

Modern two bedroom apartment for Sale in Linopetra, Limassol - 2nd floor

 Linopetra, Limassol

€430,000 +VAT





Overview

Specifications

Bedrooms



Bathrooms



Covered

89 m²

Type	Apartment
Showers	2
Toilets	2
Covered veranda	25 m²
Uncovered veranda	8.55 m²

Status	Completed
Year of construction	2024
Furnished	Unfurnished
Structure	Concrete
Energy efficiency rating	A

Description

Brand-new apartment in a premium residential building ready to move in, in the highly desirable Linopetra area of Limassol. Designed with the modern homeowner in mind, this building offers nine meticulously crafted units, each promising luxury, comfort, and a prime location.

Property Overview:

2 bedroom apartment of 89m² internal space plus 25m² covered veranda plus 8.55m² uncovered verandas on the second floor.

Exceptional Features:

-High-Quality Construction: Reinforced concrete frame with anti-earthquake specifications, clay brick walls with superior insulation, and Gypsum tile suspended ceilings.

-Elegant Finishes: LVT laminate wood flooring in living areas, custom-made kitchen and wardrobe doors, and granite countertops in kitchens and bathrooms.

-Modern Comfort: Concealed VRV air conditioning in all areas (excluding bathrooms), electric water heater and pressure system, and thermal insulated aluminum windows with electric shutters.

-Safety and Security: CCTV monitoring, video intercom systems, intruder alarm provisions, and electrically operated control gates for building and parking access.



Additional information

Facilities

Elevator

Parking, Covered

Storage

Gated complex

Solar photovoltaic panels

Heating, Provision

Solar water heater

Features

Bright

City view

Easy access to main roads

Marble stairs

Sound insulation

CCTV

Double glazing

Entrance gate

Rental potential

Spacious rooms

Ceramic tiles

Easy access to highway

Fitted wardrobes

Shutters, electric

Veranda

Distances

Amenities



500 m

Sea



2.5 km

Contact us



Pavlos Konialis

 pavlos@totalviewhomes.com

